

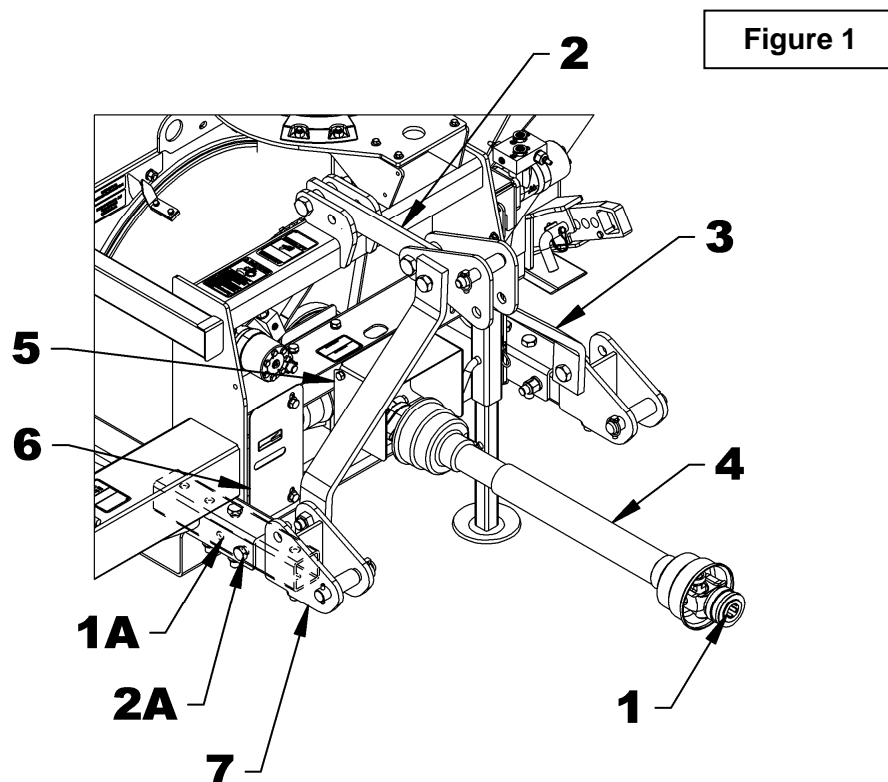
APPLICATION: For SA88B & SA88TRCB snowblowers

INSTALLATION

IMPORTANT: The reversing speed reducer does not contain any oil. It must be filled with either SAE 80W90 oil, AGMA 5EP extreme pressure oil or the equivalent. If the reversing speed reducer is operated without any oil the warranty will be nullified.

NOTE: Before proceeding with the installation, check the type of PTO on the tractor and if needed, order the appropriate yoke (Fig. 1, item 1) from your distributor.

1. Park the tractor on a flat surface, put in neutral, put on the parking brake, disengage the PTO, lower the snowblower to the ground, turn off the engine and remove the ignition key.
2. Remove the snowblower from the tractor.
3. **Figure 1:** To make installation easier, it is recommended to remove the upper hitch (item 2) as well as the left and right hitches (item 3).
4. **Figure 1:** Remove the driveline (item 4) from the snowblower. Remove the PTO protector (item 5); it will no longer be used with the gearbox.
5. **Figure 1:** Remove the cover plate (item 6) temporarily.
6. **Figure 1:** Before installing the reversing speed reducer make sure the right and left lower hitches (item 7) are in the **1A** position as shown in the figure.



INSTRUCTION SHEET
REVERSING SPEED REDUCER 1000-540

ATTENTION: The assembled reversing speed reducer weighs more than 150 lb; it is therefore recommended to install wooden blocks under the snowblower input shaft (item 1) to support the reversing speed reducer during installation.

7. **Figure 2:** Remove the 1/2" x 1" serrated flange nuts (item 2) and the 1/2" nuts (item 3) already installed on the support brackets (item 4).

8. **Figure 2:** Slightly loosen the six 1/2" nuts (item 5) holding the support brackets (item 4) to the support (item 6).

For snowblowers with serial#: 21400001 & up, the bolts should be in **position B**.

For snowblowers with lower serial#, the bolts should be in **position A**.

9. **Figure 2:** Install the assembled reversing speed reducer on the snowblower carefully aligning the input shaft (item 1) with the gearbox shaft.

10. **Figure 2:** Slide the reversing speed reducer shield (item 7) between the left bracket (item 4) and the snowblower to its original position.

11. **Figure 2:** Make sure that the sides of the support brackets (item 4) are as vertical as possible and secure with the 1/2" x 1" serrated flange nuts (item 2) and the 1/2" nuts (item 3). Tighten the bolts at 88 ft-lb or 119 N-M.

12. **Figure 2:** Push the reversing speed reducer towards the front of the snowblower until it rests completely against the snowblower and tighten the six 1/2" nuts (item 5) holding the brackets (item 4) to the support (item 6). Tighten the bolts at 88 ft-lb or 119 N-M.

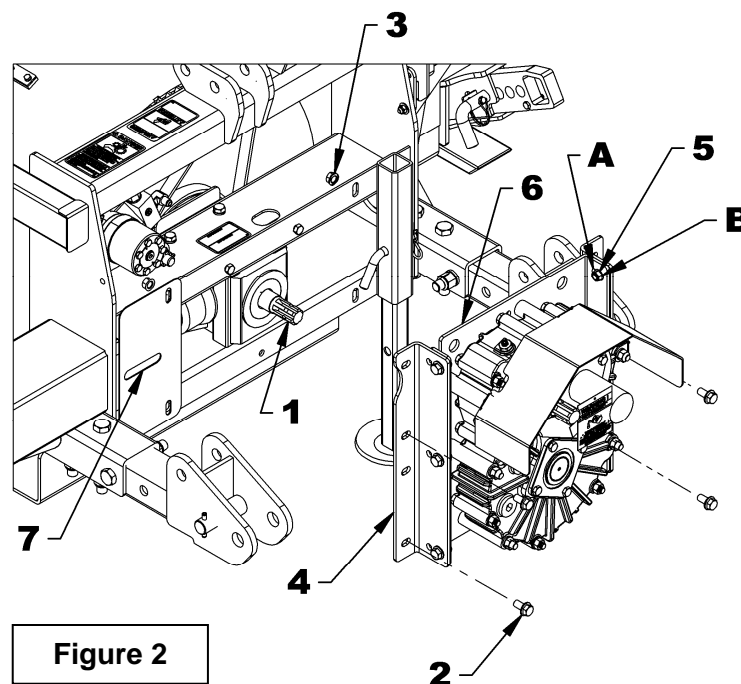
13. **Figure 1:** Install the upper hitch (item 2) as well as the left and right hitches (item 3).

IMPORTANT: Before installing the driveline, it is very important to recheck its length to ensure it is not too long. This operation is necessary since the snowblower input shaft is now closer to the tractor. Refer to the snowblower's manual for more details.

14. Replace the driveline shearbolt:

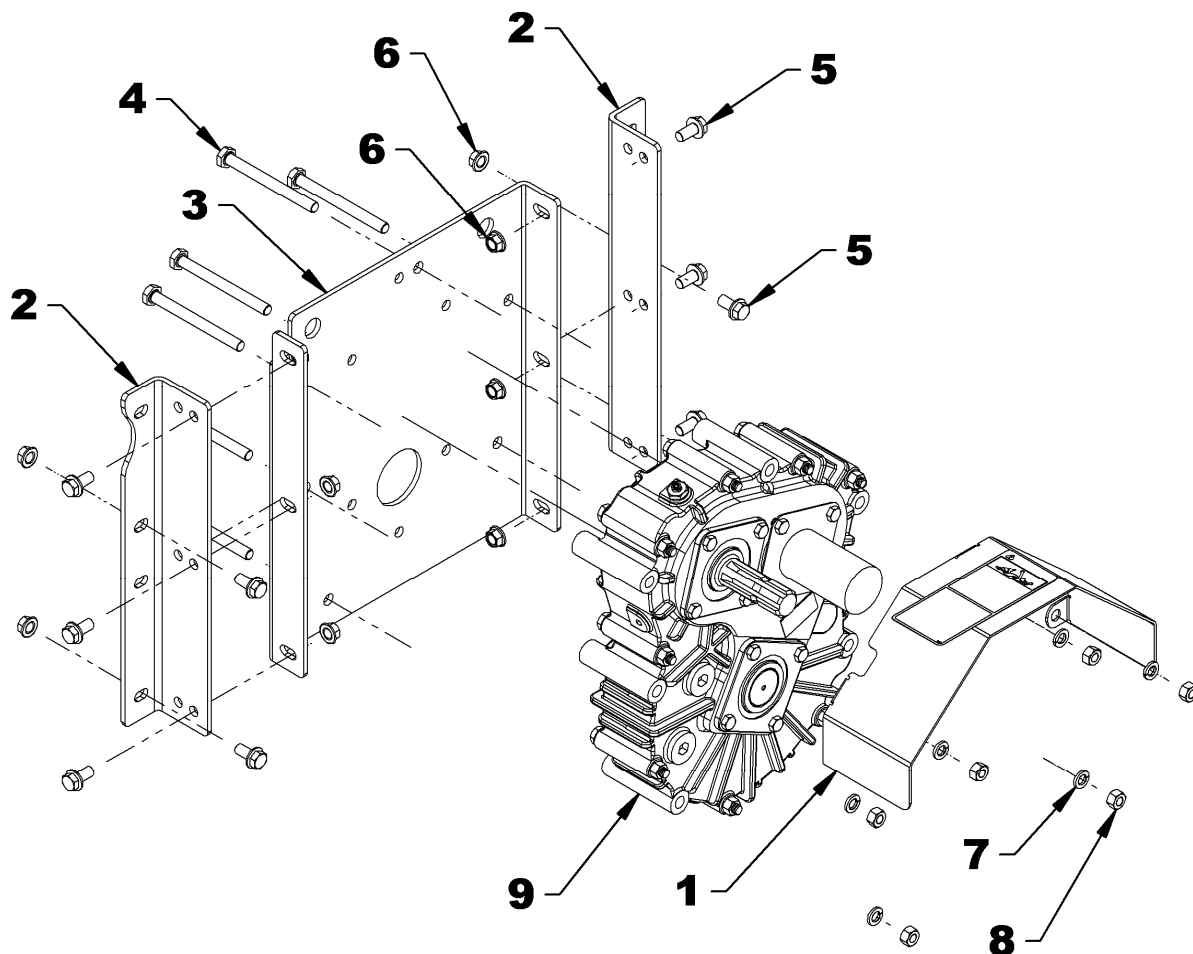
The M12 X 65 gr.8.8 by a 7/16" x 2 1/2" gr.2 bolt.

15. Install the driveline on the snowblower.



PARTS BER0113

REF.	DESCRIPTION	QTY	PART#
1	Reducer shield	1	671470
2	Reducer support bracket	2	671469
3	Reducer support	1	671174
4	Bolt hex 1/2"NC x 5 1/2" gr.5 PTD	6	O/L
5	Bolt serrated flange 1/2"NC x 1" gr.5 PTD	10	O/L
6	Nut serrated flange 1/2"NC PTD	10	O/L
7	Lockwasher 1/2" PTD	6	O/L
8	Nut hex 1/2"NCPTD	6	O/L
9	Reversing Speed Reducer 1000 @ 540 - 1 3/8" 6 splines	1	4500166



REVERSING SPEED REDUCER – 4500166

REF.	DESCRIPTION	QTY	PART #
1	Bearing 32011	4	4500171
2	Bearing 32013	2	4500172
3	Oil seal 55 x 90x 8	2	4500173
4	Oil seal 65 x 90x 8	2	4500174
5	Rubber end cap 90 x 8	2	4500175
6	Pressure vent 5PSI 1/2"NPT	1	4500176
7	Magnetic plug 1/2"NPT	1	4500177
8	Allen plug 1/2"NPT	3	4500178
9	Allen plug 3/4"NPT	2	4500179
-	Shims kit (not shown)	1	4500180

