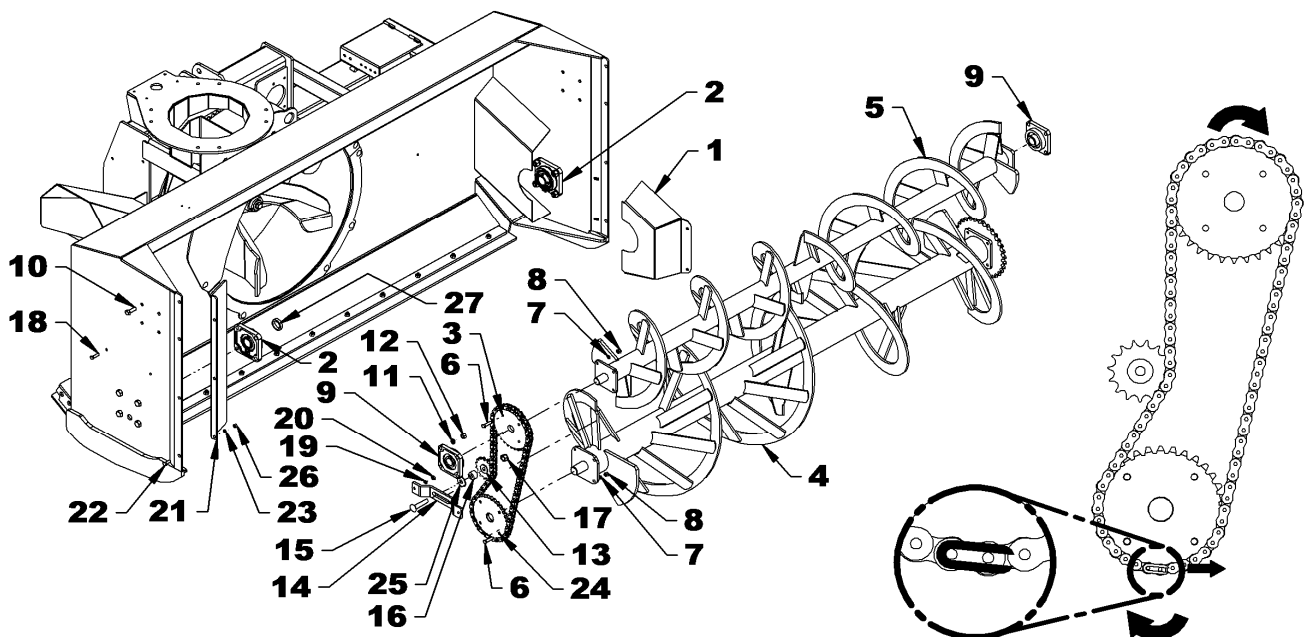


**INSTRUCTION SHEET**
**SECOND AUGER KIT**

**APPLICATION:** Serial # SPT400001 & up  
 BER0103 for SA92 & SA92TRC snowblowers  
 BER0104 for SA98 & SA98TRC snowblowers  
 BER0105 for SA102TRC snowblower

**INSTALLATION**

1. Remove the chain guard (item 1) and loosen drive chain as per instructions in the **Chain Idler Adjustment** section in the snowblower manual then remove the chain.
2. Remove the 5/8"NC x 1 3/4" bolts that secure the bearings (item 2) on each auger side. Remove the auger from the snowblower frame. Remove the bearing (item 2) and the spacer (item 27) from the right side of the lower auger (item 4).
3. Install the idler sprocket (item 13) on the chain idler (item 14), using a 5/8" NC x 3" carriage bolt, a 5/8" flat washer (11/16" hole), a spacer and a 5/8"NC nylon insert lock nut (items 15-25-16-17). Do not tighten. Attach the idler assembly inside the snowblower in the holes already drilled, with two 3/8"NC x 1 1/4" bolts, 3/8" lockwashers and 3/8"NC nuts (items 18-19-20).
4. Install the new sprocket 1 1/2" (item 24) on the lower auger using four 3/8"NC x 1 1/2" bolts, lockwashers and nylon insert lock nuts (items 6-7-8). Tighten according to the **Torque Specification Table** at the end of the snowblower manual.
5. On the upper auger, install the 1 1/4" sprocket (item 3) using four 3/8"NC x 1 1/2" bolts, lockwashers and nylon insert lock nuts (items 6-7-8). Tighten according to the **Torque Specification Table** at the end of the snowblower manual.
6. Reinstall the lower auger (item 4) with the original bearings (item 2), the 5/8" x 1 3/4" bolts, lockwashers and nuts. Make sure the auger is well seated on the left bearing and tighten the setscrews.
7. Install the upper auger (item 5) with the bearings (item 9) included with the kit and attach with 1/2" x 1 1/2" bolts lockwashers and nuts (items 10-11-12). Do not tighten the setscrews on the bearings.
8. Install the chain as shown and assemble the connecting link by placing the opening opposite the direction of the chain rotation as shown. Align the auger sprockets with the idler sprocket and tighten securely the setscrews on the auger bearings to stabilize the augers. Tighten the chain and tighten the idler sprocket.
9. Install the new chain guard (item 21) included in the kit using three 3/8"NC x 1" bolts, lockwashers and nuts (items 22-23-26). Reinstall the lower auger chain and the chain guard (item 1).
10. Tighten the chain as per instructions in the **Chain Idler Adjustment** section in the snowblower manual.



### PARTS

O/L= Obtain Locally

REF	DESCRIPTION	QTY	BER0103 92"	BER0104 98"	BER0105 102"
1	Upper auger	1	670981	670982	670983
2	Chain idler	1	655782	655782	655782
3	Chain guard	1	670980	670980	670980
4	Spacer 3/4" long	1	671005	671005	671005
5	Sprocket #60A32, hole 1 1/2"	1	3300060	3300060	3300060
6	Sprocket #H60C15	1	665397	665397	665397
7	Sprocket #60A32, trou 1 1/4"	1	654167	654167	654167
8	Flange bearing 1 1/4" 4 holes	2	4300118	4300118	4300118
9	Chain #60 x 88 links & connecting link	1	3300059	3300059	3300059
10	Connecting link #60	1	654839	654839	654839
11	Bolt hex 3/8"NC x 1" PTD	3	O/L	O/L	O/L
12	Bolt hex 3/8"NC x 1 1/4" PTD	2	O/L	O/L	O/L
13	Bolt hex 3/8"NC x 1 1/2" PTD	8	O/L	O/L	O/L
14	Bolt hex 1/2"NC x 1 1/2" PTD	8	O/L	O/L	O/L
15	Carriage bolt 5/8" x 3" PTD	1	O/L	O/L	O/L
16	Lockwasher 3/8" PTD	13	O/L	O/L	O/L
17	Lockwasher 1/2" PTD	8	O/L	O/L	O/L
18	Flat washer 5/8" PTD	1	O/L	O/L	O/L
19	Nut hex 3/8"NC PTD	5	O/L	O/L	O/L
20	Nut hex 1/2"NC PTD	8	O/L	O/L	O/L
21	Nylon insert lock nut 3/8"NC PTD	8	O/L	O/L	O/L
22	Nylon insert lock nut 5/8"NC PTD	1	O/L	O/L	O/L

