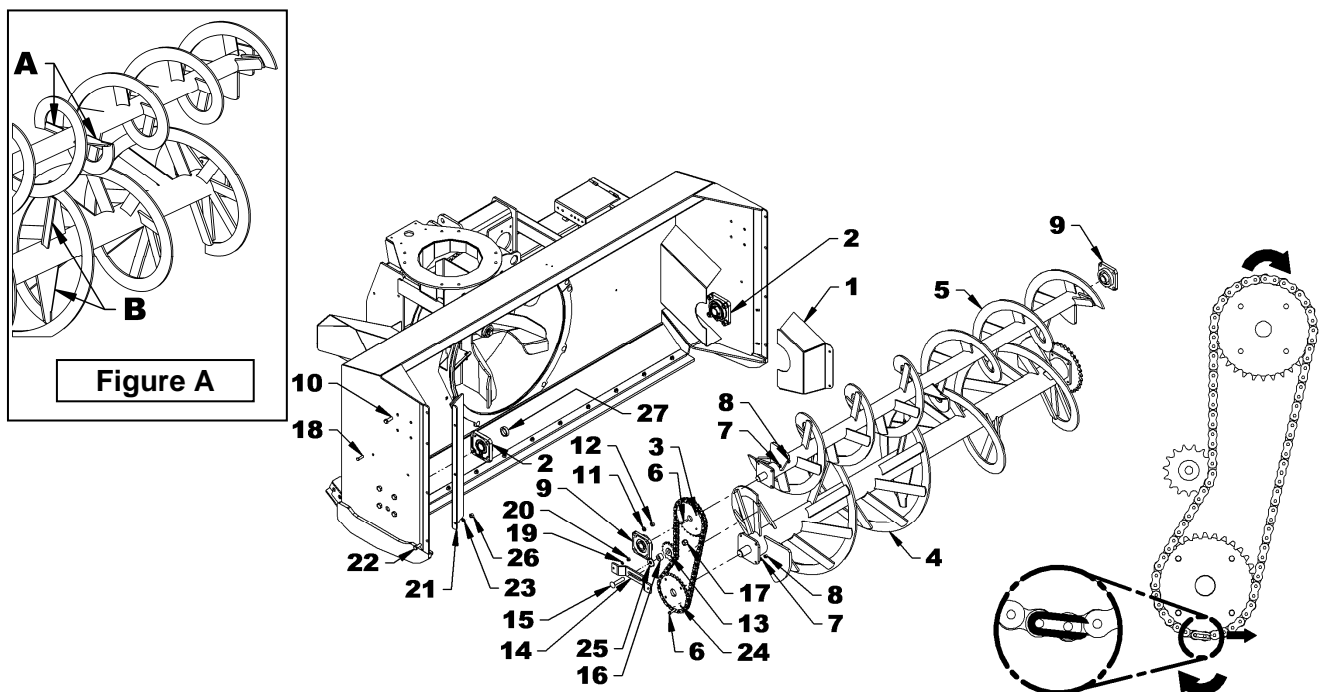


INSTRUCTION SHEET
SECOND AUGER KIT

APPLICATION: SA88 & SA88TRC snowblowers.
SERIAL #: SPT400001 & UP

INSTALLATION

1. Remove the chain guard (item 1) and loosen drive chain as per instructions in the **Chain Idler Adjustment** section in the snowblower manual then remove the chain.
 2. Remove the 5/8"NC x 1 3/4" bolts that secure the bearings (item 2) on each auger side. Remove the auger from the snowblower frame. Remove the bearing (item 2) and the spacer (item 27) from the right side of the lower auger (item 4).
- NOTE:** The auger can be partially removed by removing completely the right flange bearing bolts, but by giving some play to those of the left flange bearing. In this way, the auger may be moved out of the right side frame for installing the sprocket.
3. Install the idler sprocket (item 13) on the chain idler (item 14), using a 5/8" NC x 3" carriage bolt, a 5/8" flat washer (11/16" hole), a spacer and a 5/8"NC nylon insert lock nut (items 15-25-16-17). Do not tighten. Attach the idler assembly inside the snowblower in the holes already drilled, with two 3/8"NC x 1 1/4" bolts, 3/8" lockwashers and 3/8"NC nuts (items 18-19-20).
 4. Install the sprocket 1 1/4"- 4 1/8" c/c holes (item 24) on the lower auger using four 3/8"NC x 1 1/2" bolts, lockwashers and nylon insert lock nuts (items 6-7-8). Tighten according to the **Torque Specification Table** at the end of the snowblower manual.
 5. On the upper auger, install the 1 1/4"- 3 1/2" c/c holes (item 3) using four 3/8"NC x 1 1/2" bolts, lockwashers and nylon insert lock nuts (items 6-7-8). Tighten according to the **Torque Specification Table** at the end of the snowblower manual.
 6. Reinstall the lower auger (item 4) with the original bearings (item 2), the 1/2"NC x 1 1/2", bolts, lockwashers and nuts. Make sure the auger is well seated on the left bearing and tighten the setscrews.
 7. Install the upper auger (item 5) with the bearings (item 9) included with the kit and attach with 1/2" x 1 1/2" bolts lockwashers and nuts (items 10-11-12). Do not tighten the setscrews on the bearings.
 8. Install the chain as shown in figure, making sure that the middle pales are placed perpendicular to each other between the two augers as shown in **figure A**. Assemble the connecting link by placing the opening opposite the direction of the chain rotation as shown. Align the auger sprockets with the idler sprocket and tighten securely the setscrews on the auger flange bearings to stabilize the augers. Tighten the chain and tighten the idler sprocket.
 9. Install the new chain guard (item 21) included in the kit using three 1/2"NC x 1" bolts, lockwashers and nuts (items 22-23-26). Reinstall the lower auger chain and the chain guard (item 1).
 10. Tighten the chain as per instructions in the **Chain Idler Adjustment** section in the snowblower manual.



INSTRUCTION SHEET
SECOND AUGER KIT
PARTS

REF.	DESCRIPTION	QTY	PART #
1	Upper auger	1	671043
2	Chain idler	1	655782
3	Chain guard	1	670980
4	Spacer 1/4" thick	1	671084
5	Sprocket #60A32, 1 1/4" hole, 4 1/8" c/c holes	1	3300063
6	Sprocket H60C15	1	665397
7	Sprocket #60A32, 1 1/4" hole, 3 1/2" c/c holes	1	654167
8	Flange bearing 1 1/4" 4 holes	2	4300118
9	Chain #60 x 88 links & connecting link	1	3300059
10	Connecting link #60	1	654839
11	Bolt hex 1/2"NC x 1 1/4" PTD	3	O/L
12	Bolt hex 3/8"NC x 1 1/4" PTD	2	O/L
13	Bolt hex 3/8"NC x 1 1/2" PTD	8	O/L
14	Bolt hex 1/2"NC x 1 1/2" PTD	8	O/L
15	Carriage bolt 5/8" x 2 1/2" PTD	1	O/L
16	Lockwasher 3/8" PTD	10	O/L
17	Lockwasher 1/2" PTD	11	O/L
18	Flat washer 5/8" (11/16" hole) PTD	1	O/L
19	Nut hex 3/8"NC PTD	2	O/L
20	Nut hex 1/2"NC PTD	11	O/L
21	Nylon insert lock nut 3/8"NC PTD	8	O/L
22	Nylon insert lock nut 5/8"NC PTD	1	O/L

