

INSTRUCTION SHEET

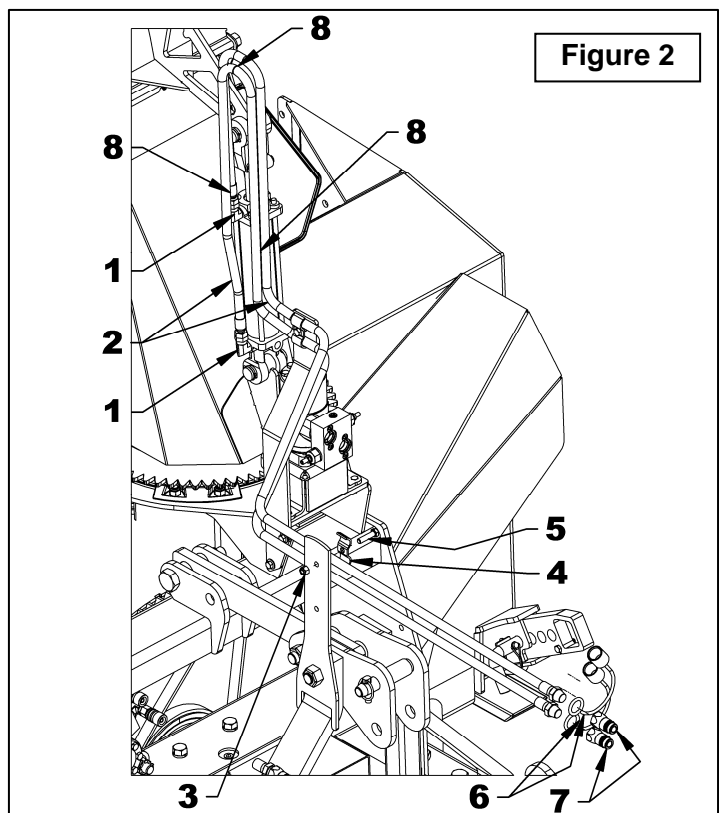
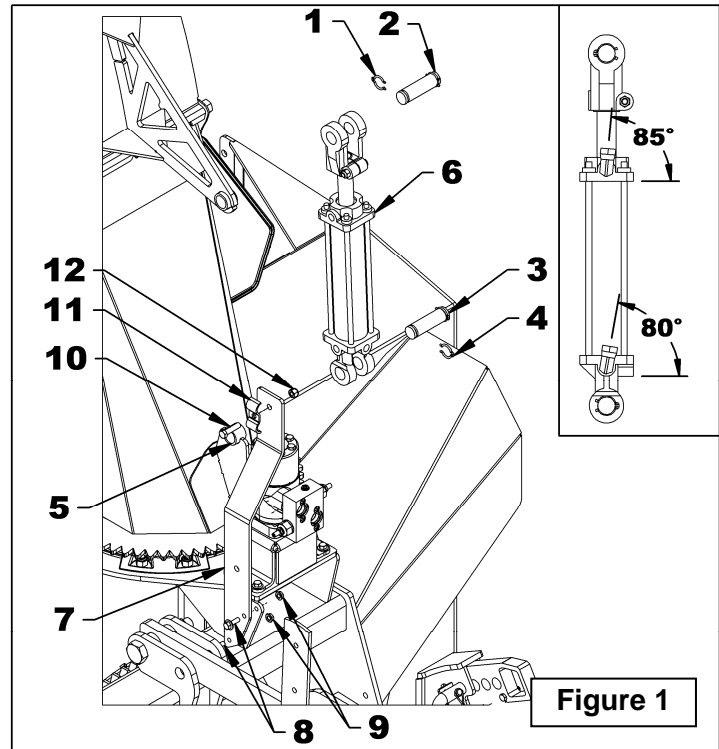
HYDRAULIC CHUTE DEFLECTOR

APPLICATION: BER0085 Two part Chute

INSTALLATION

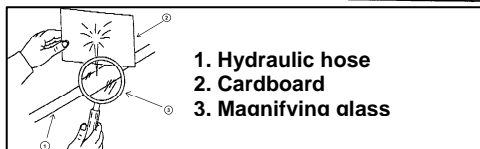
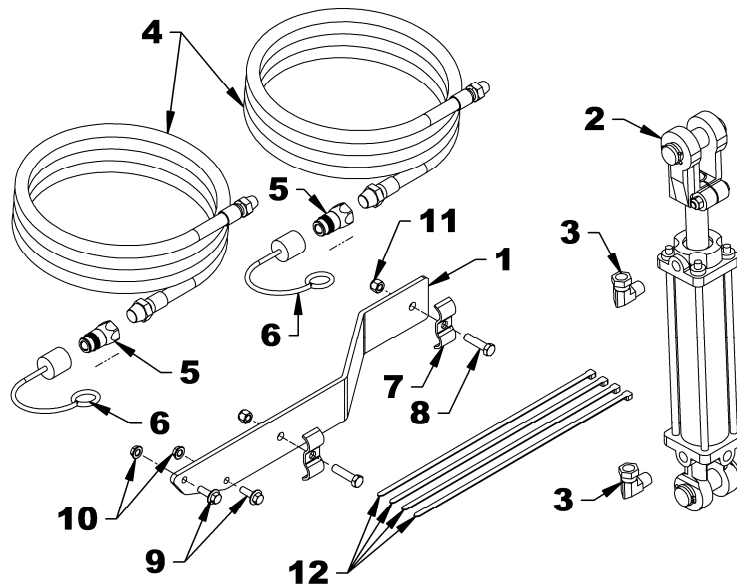
1. **Figure 1:** Remove a circlip (items 1-4) from each cylinder pin (items 2-3) and remove the pins. Placing the hydraulic ports in the position shown on figure, attach the fixed end of the cylinder (item 6) to the chute base (item 5) and the rod end to the deflector with the pins and circlips.
2. **Figure 1:** Install the female swivel ends of the two elbow flow restrictors on the cylinder ports, pointing up the outputs and at the angles shown in figure.
3. **Figure 2:** Install a 1/2"NPT quick coupler with a dust cap (items 6-7) at one end of the two hoses.
4. **Figure 2:** Attach the other end of the hoses (item 2) to the cylinder elbows (items 1).
5. **Figure 1:** Install the hose support (item 7) using two 5/16"NC x 1" serrated flange bolts and 5/16"NC serrated flange nuts (items 8-9).
6. **Figure 1:** Attach the hose clamp (item 11) with a 3/8"NC x 1 1/2" bolt and 3/8"NC nut (items 10, 12). Do not tighten.
7. **Figure 2:** Attach hoses (item 2) to the hose support previously installed by running them inside the hose clamp.
8. **Figure 2:** Attach hoses (item 2) to the hose support located on the three point hitch with the hose clamp (item 4), a 3/8"NC x 1 1/2" bolt and 3/8"NC nut (items 3, 5).
9. **Figure 2:** Secure with 1/4" x 15" lg nylon tie wraps (items 8).

NOTE: Make sure to leave enough play to the hoses to allow full rotation of the chute and that the radius of curvature of the hoses remains correct. Also make sure they do not cross and they do not rub against sharp edges. Rotate the



INSTRUCTION SHEET
HYDRAULIC CHUTE DEFLECTOR
PARTS

REF.	DESCRIPTION	QTY	PART #
1	Hose support	1	670948
2	Cylinder 2" x 8"	1	390022
	- Seal kit	1	3900205
3	Flow restrictor, 90° elbow 3/8"NPT M x 3/8"NPT SWF	2	3900204
4	Hose 3/8" x 140"	2	3700270
5	Quick coupler 1/2"NPT male	2	656480
6	Dust cap	2	664898
7	Hose clamp - double	2	666583
8	Bolt hex 3/8"NC x 1 1/2" Gr.5 PTD	2	O/L
9	Serrated flange bolt 5/16"NC x 1" Gr.5 PTD	2	O/L
10	Serrated flange nut 5/16"NC PTD	2	O/L
11	Nylon insert lock nut 3/8"NC PTD	2	O/L
12	Nylon tie wrap 1/4" x 15"	4	O/L



1. Hydraulic hose
2. Cardboard
3. Magnifying glass



CAUTION: To avoid serious personal injury. Escaping hydraulic/ diesel fluid under pressure can penetrate the skin causing serious injury.

- Do not use your hands to check for leaks. Use a piece of cardboard or paper to search for leaks.
- Stop engine and relieve pressure before connecting or disconnecting lines.
- Tighten all connections before starting engine or pressurizing lines.
- If any fluid is injected into the skin, obtain medical attention immediately or gangrene may result