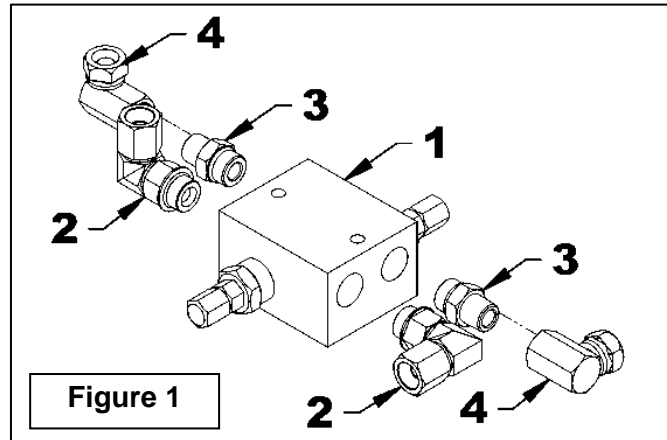


DUAL CROSSOVER VALVE KIT

APPLICATION: "C" category Blades.

INSTALLATION

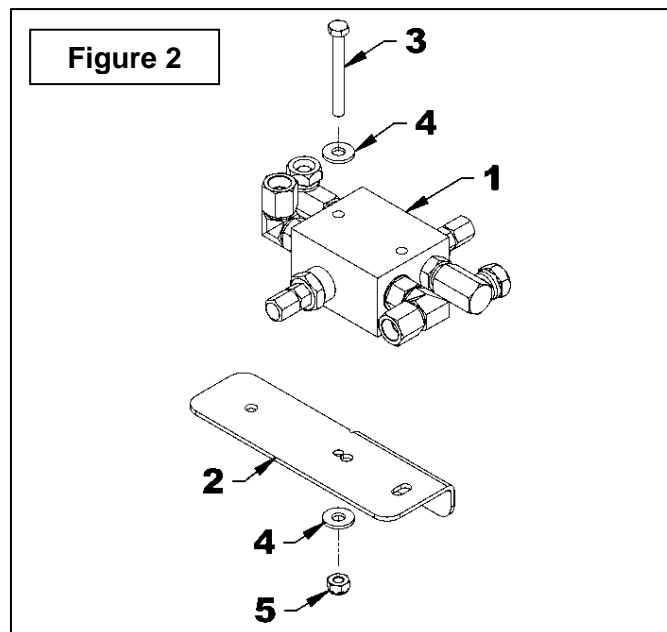
1. **Figure 1:** Install on the crossover relief valve (item 1) two 90° - 3/4"ORB M x 3/8"NPT SWF elbows (item 2) as shown on figure.
2. **Figure 1:** Install on the crossover relief valve (item 1) two 3/4"ORB M x 3/8"NPT M adapters (item 3). Apply thread sealant on NPT part and then install the two 90° - 3/8"NPT F x 3/8"NPT SWF elbows (item 4) as shown on figure.



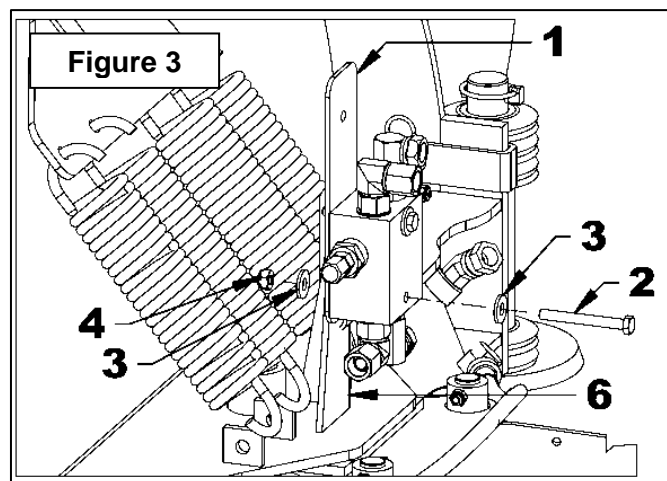
3. **Figure 2:** Attach the crossover relief valve (item 1) to the hydraulic block support (item 2) with a 1/4"NC x 2 3/4" hex bolt (item 3), two 1/4" (5/16" hole) flat washers (item 4) and a 1/4"NC nylon insert locknut (item 5).

According to the crossover valve model used, the hardware might be different. Measure the holes dimension, if they are slightly bigger than 5/16", use a 5/16" x 2 3/4" hex bolt, two 5/16" (3/8" hole) flat washers and a 5/16"NC nylon insert locknut.

4. **Figure 2:** Attach the hydraulic block support (item 1) to the hose support (item 6) that is welded to the blade, with a 1/4"NC x 2 3/4" hex bolt (item 2), two 1/4" (5/16" hole) flat washers (item 3) and a 1/4"NC nylon insert locknut (item 4). Rest the support bended part (item 1) against the hose support (item 6) and tighten.



According to the crossover valve model used, the hardware might be different. Measure the holes dimension, if they are slightly bigger than 5/16", use a 5/16" x 2 3/4" hex bolt, two 5/16" (3/8" hole) flat washers and a 5/16"NC nylon insert locknut.

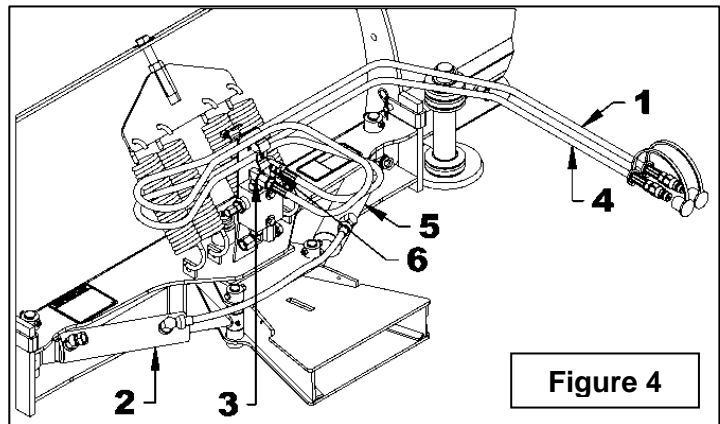
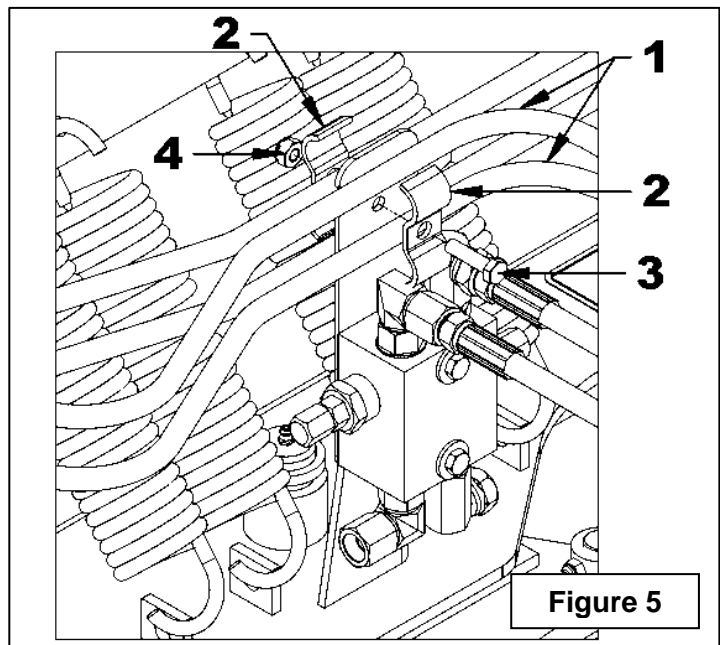
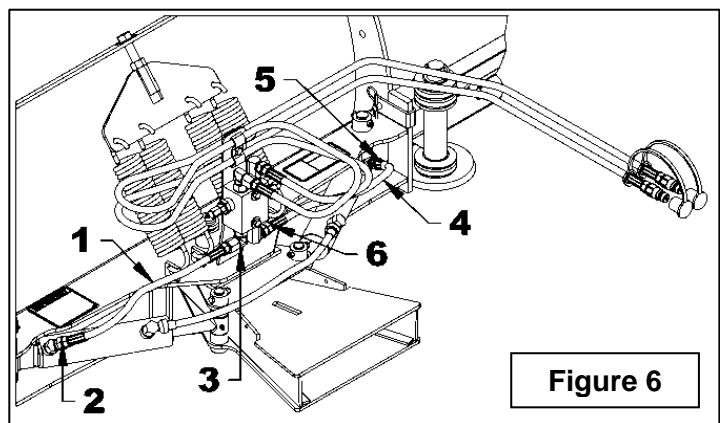


INSTRUCTION SHEET
DUAL CROSSOVER VALVE KIT

5. **Figure 4:** Remove the hose (item 1) from the cylinder (item 2) and install it to the 90° elbow (item 3) of the crossover valve, by applying thread sealant on the hose male part.
6. **Figure 4:** Remove the other hose (item 4) from the other cylinder (item 5) and install it to the 90° elbow (item 6) of the crossover valve, by applying thread sealant on the hose male part.
7. **Figure 5:** Fix the two hoses (item 1) to the hydraulic block support with two hose clamps (item 2) and a 5/16" x 1 1/4" hex bolt (item 3) and a 5/16" nylon insert locknut (item 4). Run the hoses on front of the hydraulic block support, make a loop then run behind the hydraulic block support.
8. **Figure 6:** Apply thread sealant to the two ends of a 1/4" x 19 1/2"lg hose (item 1), and fix one end to the cylinder 45° elbow (item 2) and the other end to the 90° elbow (item 3) under the crossover valve.
9. **Figure 6:** Apply thread sealant to the two ends of the other hose (item 4), and fix one end to the cylinder 45° elbow (item 5) and the other end to the 90° elbow (item 6) under the crossover valve.

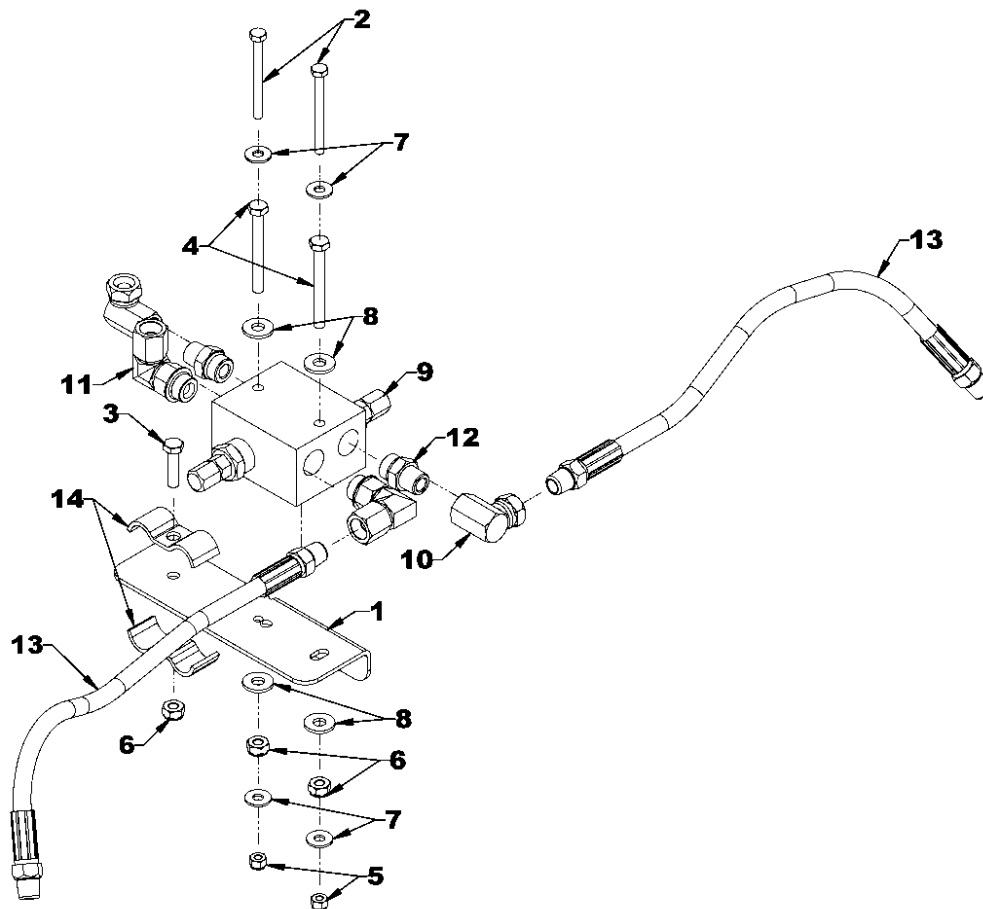
IMPORTANT : CHECK THE HOSE LENGTH GAP.

Install the blade on the subframe, set to float position, lower to maximum and angle in both directions, to check if hoses are long enough. If hoses become too tight, shorten the loop made on step 7.


Figure 4

Figure 5

Figure 6

INSTRUCTION SHEET
DUAL CROSSOVER VALVE KIT
PARTS

REF.	DESCRIPTION	QTY	PART #
1	Hydraulic block support	1	669701
2	Bolt hex 1/4" x 2 3/4"NC gr.5 PTD	2	0100013
3	Bolt hex 5/16"NC x 1 1/4" lg. Gr.5, PTD	1	0100020
4	Bolt hex 5/16"NC X 2 3/4" lg. Gr.5, PTD	2	0100027
5	Nylon insert locknut 1/4"NC PTD	2	1000003
6	Nylon insert locknut 5/16"NC PTD	3	1000005
7	Flat washer 1/4" (5/16" hole) PTD	4	1400002
8	Flat washer 5/16" (3/8" hole) PTD	4	1400003
9	Dual crossover relief valve	1	3920003
10	Elbow 90° - 3/8"NPT F X 3/8"NPT SWF	2	654658
11	Elbow 90° M/SWF 3/4"ORB x 3/8"NPT	2	655374
12	Adaptor 3/4"ORB M x 3/8"NPT M	2	656103
13	Hose 1/4" X 19" lg., 3/8" NPT M x 3/8" NPT M	2	663417
14	Hose clamp - double	2	666583



NOTE