

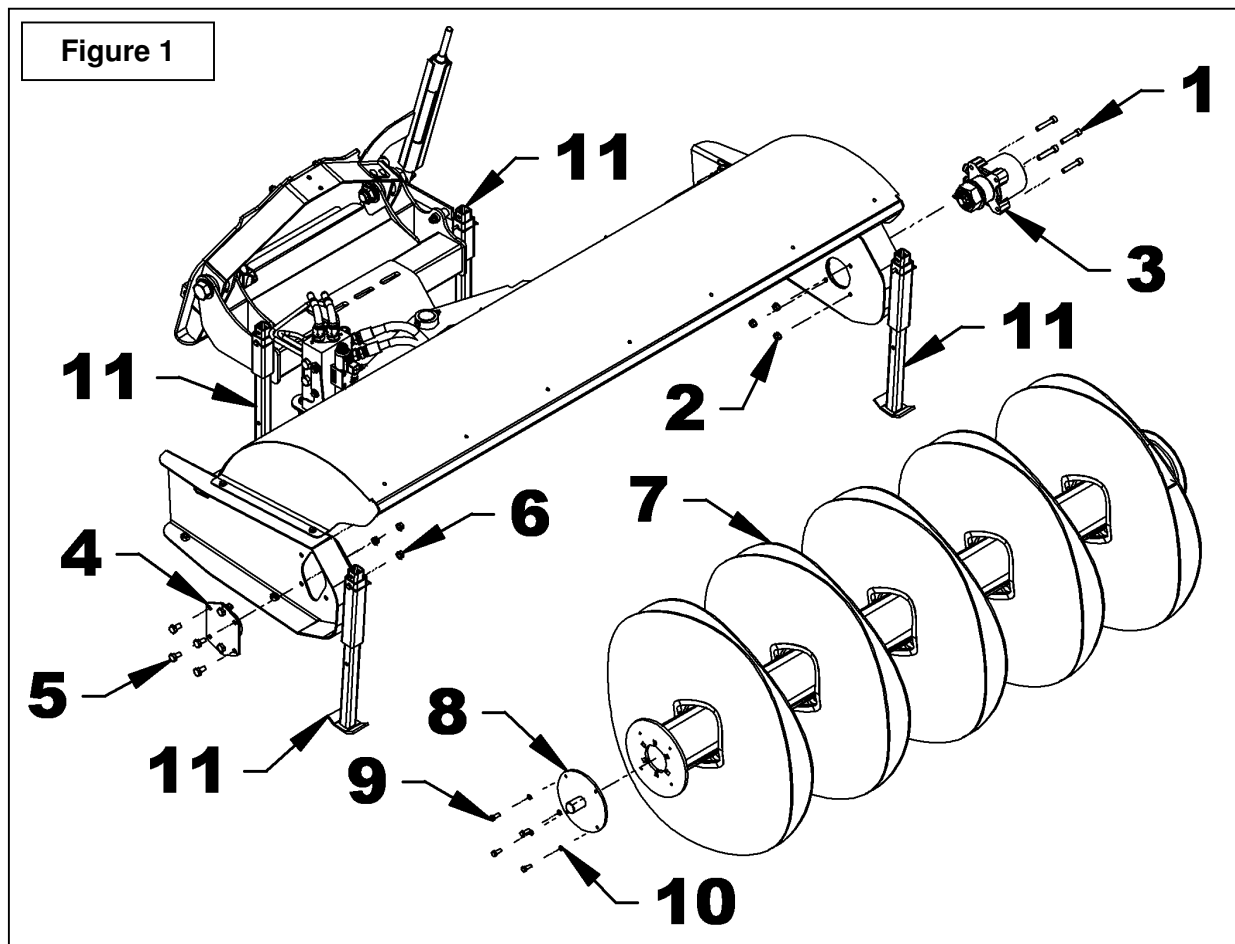
INSTRUCTION SHEET

BER0005 – SECOND HYDRAULIC MOTOR KIT

INSTALLATION

NOTE: The broom does not need to be installed on the vehicle to install the motor.

1. Set the broom on its four parking stands (item 11).
2. Remove the four allen socket head cap screws (item 1) and the four nuts (item 2) holding the hydraulic motor (item 3).
3. Loosen the setscrews on the bearing.
4. Remove the four bolts (item 5) and two nuts (item 6) holding the support plate (item 5).
5. Remove the brush support (item 7) from under the housing.
6. Remove the four bolts (item 9), lockwashers (item 10) and the brush support plug (item 8).



INSTRUCTION SHEET

BER0005 – SECOND HYDRAULIC MOTOR KIT

Refer to figure 2 unless otherwise specified.

7. Attach the drive plate (item 2) to the brush support (item 1) instead of the plug (fig. 1, item 8) with six 7/16"NC x 1 1/4" carriage bolts (item 3) six 7/16"NC serrated flange nuts (item 4). Tighten at 55 lb/pi.
8. Place the brush support (item 1) under the housing.
9. Place the spacer (item 6) on the hub of the motor (item 5). Raise the brush support with a jack to align it with the hole in the housing and insert the hub (item 5) in the brush support (item 1). It might be necessary to turn the brush support (item 1) to align the hub faces with the drive plate (item 2) bolted to the brush support.
10. Attach the motor (item 5) and the spacer (item 6) with the four \varnothing 1/2"NC x 2 1/2" allen socket head cap screws (item 7) and four \varnothing 1/2"NC serrated flange nuts (item 8).
11. Attach the short end of the 90° - 1 1/16"JIC male adapter (item 10) at one end of the 15 1/2" hose (item 9).
12. Insert the long end of the adapter (item 10) and a \varnothing 1" flat washer (item 11) in the lower hole of the frame and attach, without tightening, with a \varnothing 1" flat washer (item 11) and a \varnothing 1 1/16"JIC bulkhead nut (item 12).
13. Attach the other end of the 15 1/2" hose (item 9) to the lower adapter installed on the motor (item 5).
14. Replace the plugs on the right side of the hydraulic block with 45° 1 1/16"JIC male x 7/8"ORB male elbows (item 13) and position them at a 30° angle (see figure).
15. Connect the 21" hose (item 14) to the lower adapter (item 10) and the other end to the upper elbow (item 13).
16. Repeat steps 11-12-13 for the second hose (item 9).
17. Connect the 21" hose (item 14) to the upper adapter (item 10) and the other end to the lower elbow (item 13).

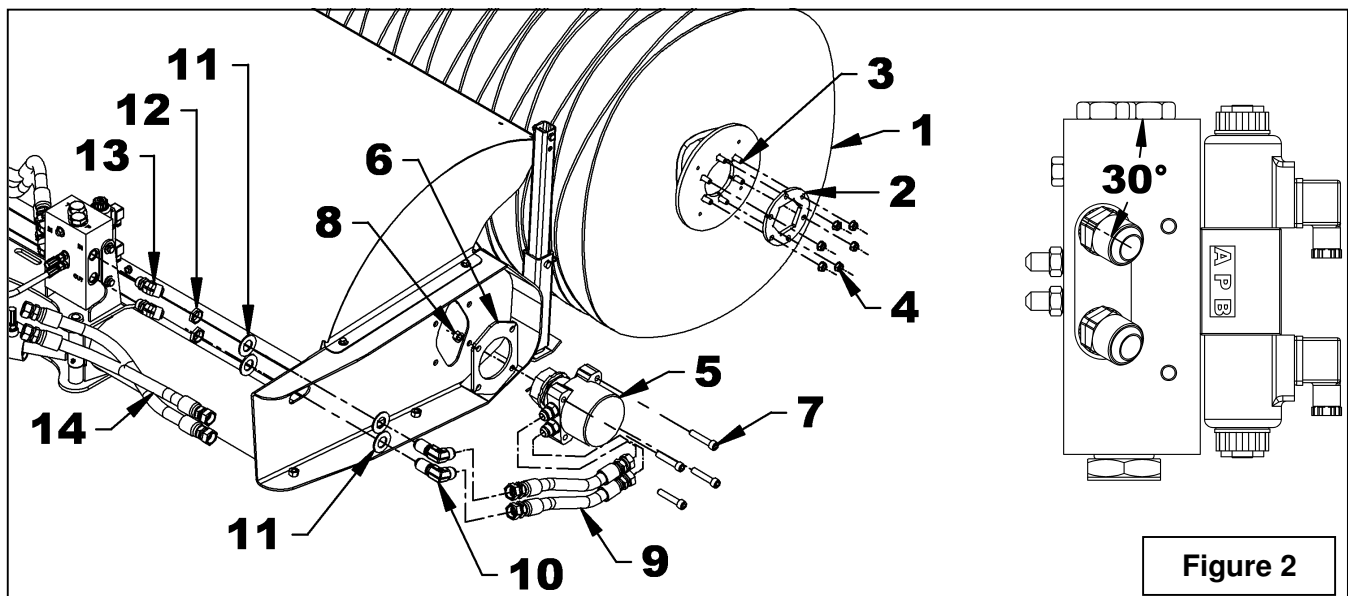


Figure 2

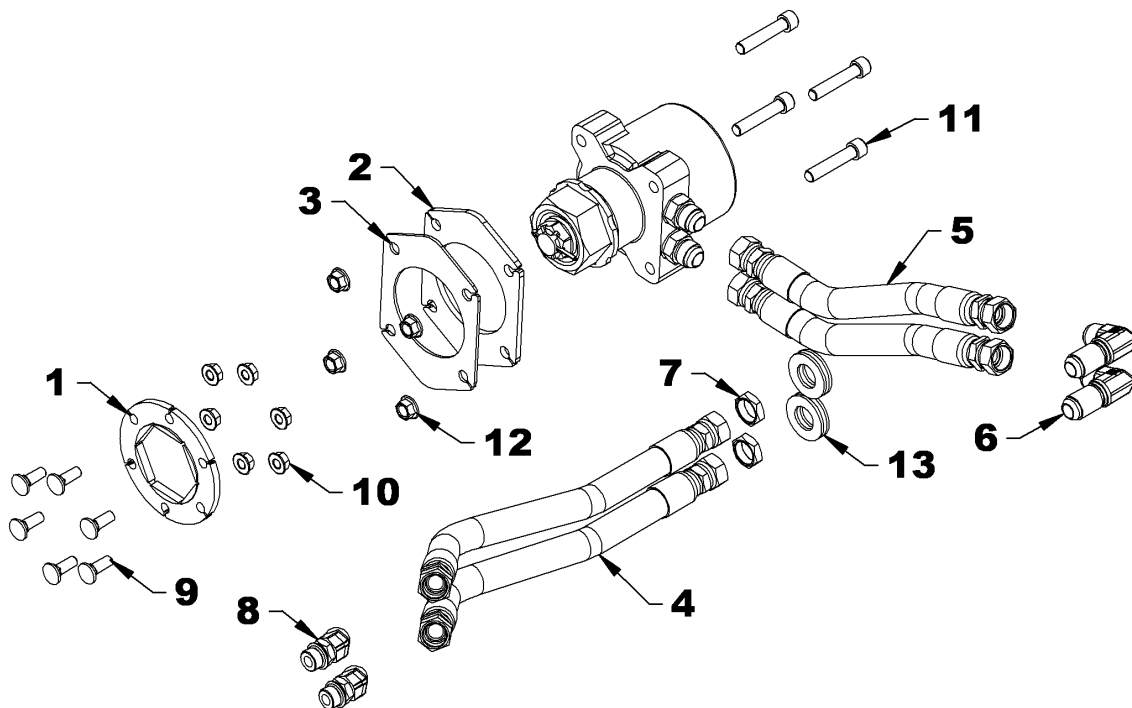
INSTRUCTION SHEET

BER0005 – SECOND HYDRAULIC MOTOR KIT

PARTSS

REF.	DESCRIPTION	QTY	PART #
1	Drive plate	1	668167
2	Spacer 1/4"	1	668168
3	Spacer 1/8"	1	668169
4	Hose $\varnothing 3/4$ "x 21" - 1 1/16"JIC SWF. X 1 1/16"JIC SWF	2	3700133
5	Hose $\varnothing 3/4$ "x 15 1/2" - 1 1/16"JIC SWF X 1 1/16"JIC SWF	2	3700130
6	Adapter 90° 1 1/16"JIC male x 1 1/16"JIC male	2	2600164
7	Bulkhead nut 1 1/16"JIC	2	2600165
8	Elbow 45° 1 1/16"JIC male x 7/8"ORB male	2	2600166
9	Carriage bolt $\varnothing 7/16$ "NC x 1 1/4" PTD	6	0300019
10	Serrated flange nut 7/16"NC PTD	6	0900068
11	Allen socket head cap screw $\varnothing 1/2$ "NC x 2 1/2" Gr.8	4	0800021
12	Serrated flange nut $\varnothing 1/2$ "NC PTD	4	0900046
13	Flat washer 1" PTD	4	O/L

O/L obtain locally



INSTRUCTION SHEET

BER0005 – SECOND HYDRAULIC MOTOR KIT

PARTS

REF.	DESCRIPTION	QTY	PART #
1	Hydraulic motor 18.3 cubic inch 300cc	1	3910002
2	Castle nut 1"-20NEF mince	1	1100026
3	Driving hub	1	668162
4	Cotter pin 5/32" x 2"	1	1500009
5	Union 7/8"ORB male x 1 1/16"JIC male	2	2600058

O/L obtain locally

