



INSTRUCTION SHEET

9484 – MANUAL NOZZLE ROTATION

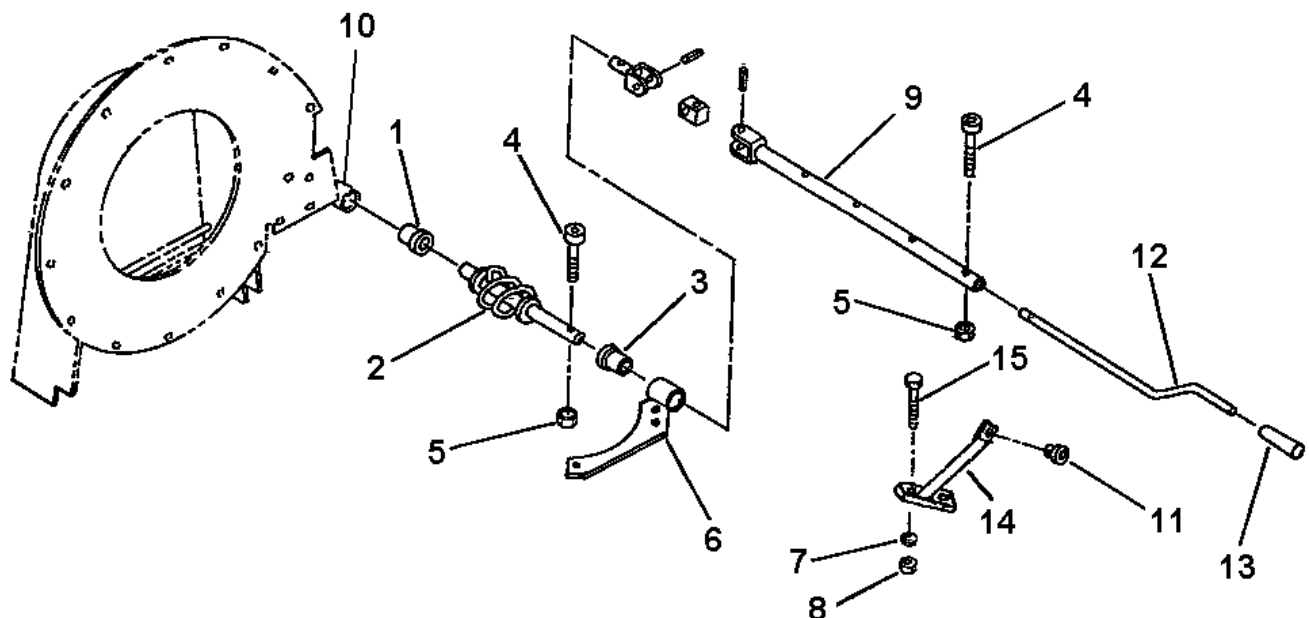
Manual Nozzle Rotation (Option 9484)

1. Insert the 1 11/16"lg. plastic bushing (item 3) in the rotation bracket (item 6). Grease the two ends of the rotation worm (item 2) and insert the rotation worm in the bushing (item 3).
2. Insert the 1 5/16" plastic bushing (item 1) in the tube welded behind blower (item 10)
3. Install the assembly by placing the rotation bracket (item 6) under the nozzle plate of the debris blower.
4. Install the handle support (item 14) on the 3 point left attaching plate using two 5/16"NC x 1" bolts, lockwashers and nuts (items 15-7-8). Tighten securely.
5. Insert assembled rotation tube (item 9) inside the rotation worm. Align holes and insert a 10-24 x 1" allen setscrew (item 4) making sure the setscrew sinks in the worm. Secure with a nylon insert locknut (item 5).
6. Install the plastic grommet (item 11) in the handle support (item 14).
7. Insert the handle (item 12) inside the grommet and inside the rotation tube (item 9). Select desired length, align nearest holes and secure with an allen setscrew (item 4) and nylon insert locknut (item 5).
8. Adjust handle position and height to a comfortable and safe operating position after the debris blower has been mounted to the tractor.



CAUTION: To avoid personal injury, check the full lifting range of the debris blower, to ensure that the nozzle rotation handle is clear of the operator's area when the blower is in raised position.

9. Install plastic handle (item 13) over rotation handle (item 12).
10. Tighten all bolts according to the Torque Specification Table at the end of the manual.





INSTRUCTION SHEET

9484 – MANUAL NOZZLE ROTATION

MANUAL NOZZLE ROTATION SYSTEM - 9484

REF.	DESCRIPTION	QTY.	PART #
1	Plastic bushing 1 5/16"	1	657335
2	Rotation worm	1	661283
3	Plastic bushing 1 11/16"	1	657336
4	Allen setscrew 10-24NC x 1"	2	O/L
5	Nylon insert locknut 10-24NC	2	O/L
6	Rotation bracket	1	661508
7	Rotation yoke	1	659595
8	Universal block	1	658193
9	Rotation tube	1	660188
10	Spring pin 1/4" x 1 1/4"	2	O/L
11	Plastic grommet	1	657390
12	Rotation handle	1	658252
13	Handle grip	1	656797
14	Handle support	1	661721
15	Bolt hex. 5/16" NC x 1"	2	O/L
16	Lockwasher 5/16"	2	O/L
17	Nut hex. 5/16" NC	2	O/L

