

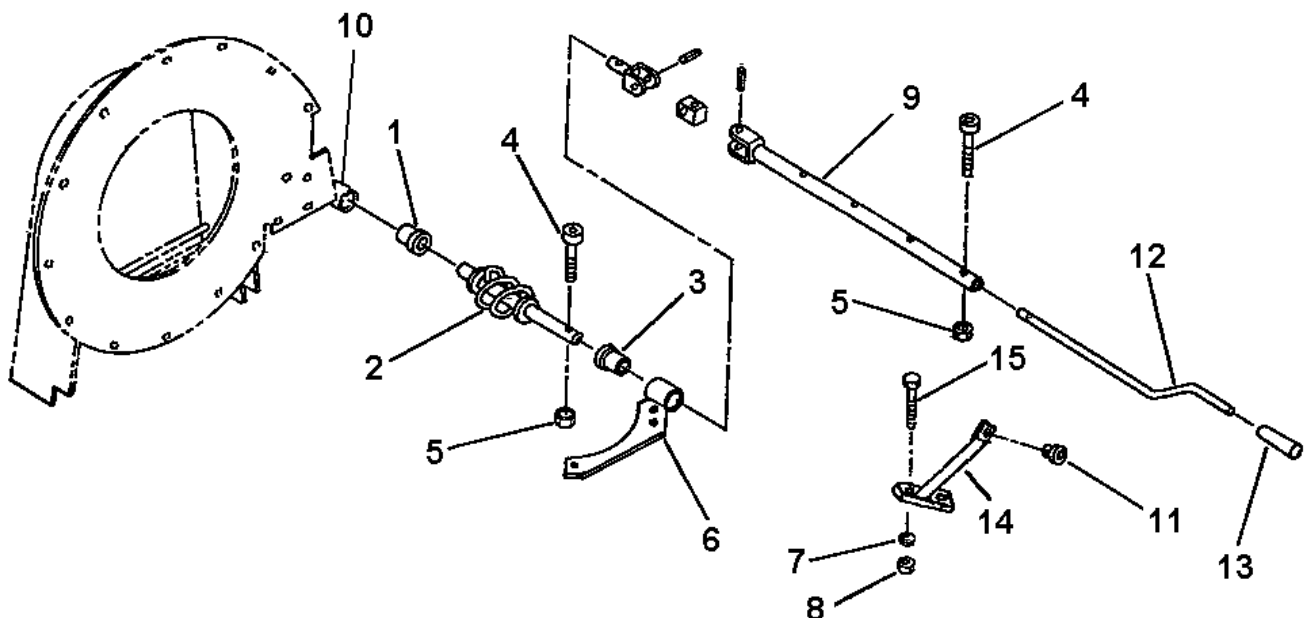
INSTRUCTION SHEET
MANUAL NOZZLE ROTATION
Installation

1. Insert the 1 11/16"lg. plastic bushing (item 3) in the support bracket (item 6). Grease the two ends of the rotation worm (item 2) and insert the rotation worm in the bushing (item 3).
2. Insert the 1 5/16" plastic bushing (item 1) in the tube welded behind blower (item 10).
3. Install the rotation worm assembly in the 1 5/16" plastic bushing (item 1) by placing the support bracket (item 6) under the nozzle plate of the debris blower.
4. Install the handle support (item 14) on the 3-point left hitch using two 5/16"NC x 1" bolts, lockwashers and nuts (items 15-7-8). Tighten securely.
5. Insert assembled rotation tube (item 9) inside the rotation worm. Align holes and insert a 10-24 x 1" allen socket head cap screw (item 4) making sure the cap screw sinks into the worm. Secure with a nylon insert locknut (item 5).
6. Install the plastic grommet (item 11) in the handle support (item 14).
7. Insert the handle (item 12) inside the grommet and inside the rotation tube (item 9). Select desired length, align nearest holes and secure with an allen socket head cap screw (item 4) and nylon insert locknut (item 5).
8. After the debris blower has been mounted to the tractor, adjust handle position and height to a comfortable and safe operating position.



CAUTION: To avoid personal injury, check the full lifting range of the debris blower, to ensure that the nozzle rotation handle is clear of the operator's area when the blower is in raised position.

9. Install plastic handle (item 13) over rotation handle (item 12).
10. Tighten all bolts according to the Torque Specification Table at the end of the debris blower manual.



INSTRUCTION SHEET
MANUAL NOZZLE ROTATION
PARTS

REF.	DESCRIPTION	QTY	PART #
1	Plastic bushing 1 5/16"	1	657335
2	Rotation worm	1	661283
3	Plastic bushing 1 11/16"	1	657336
4	Allen socket head cap screw 10-24NC x 1"	2	O/L
5	Nylon insert locknut 10-24NC	2	O/L
6	Support bracket	1	661508
7	Rotation yoke PTD	1	659595
8	Universal block PTD	1	658193
9	Rotation tube PTD	1	660188
10	Spring pin 1/4" x 1 1/4"	2	O/L
11	Plastic grommet HDPE	1	657390
12	Rotation handle	1	658252
13	Handle	1	656797
14	Handle support	1	661721
15	Bolt hex. 5/16" NC x 1"	2	O/L
16	Lockwasher 5/16"	2	O/L
17	Nut hex. 5/16" NC	2	O/L

