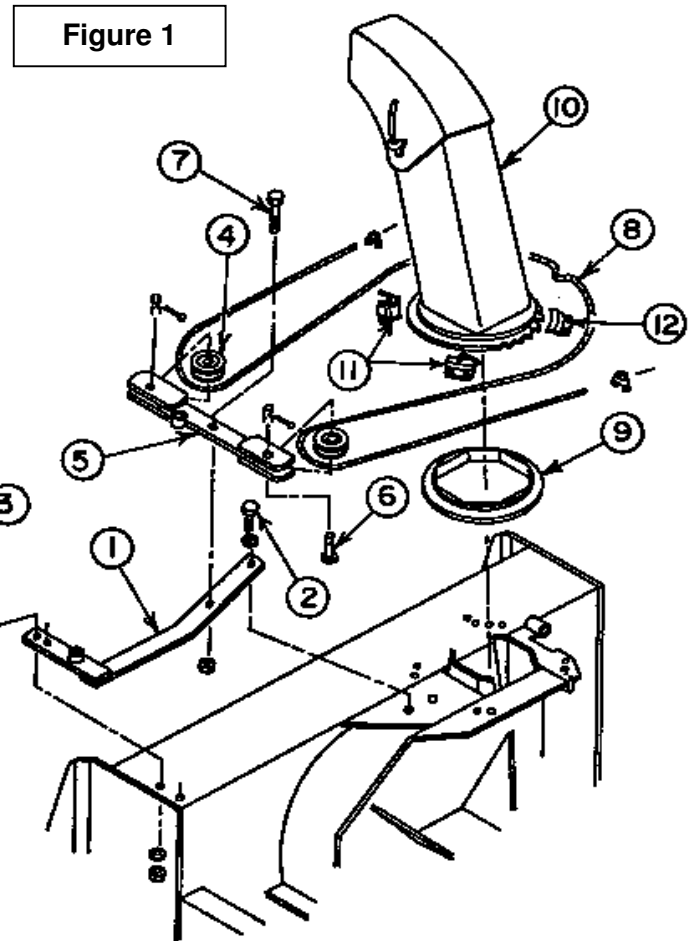


INSTRUCTION SHEET

9379 ROTATION BY CYLINDER

INSTALLATION

1. **(FIGURE 1)** Attach longest flat bar end of rotation arm support (item 1) on the underside of chute base using a 5/8" x 1" bolt (item 2) and lockwasher. Secure other end to collector housing using two 3/8" x 1" bolts (item 3), lockwashers and nuts with bolt heads on top side. Torque 5/8" bolt to 150-180 lbs/ft., and torque the two 3/8" bolts to 35-42 lbs/ft.
2. **(FIGURE 1)** Assemble pulleys (item 4) in rotation arm (item 5) using two 5/8" x 1 1/8" pins (item 6) with the pin heads on the underside as shown, and secure with two 1/8" x 1 1/4" cotter pins.
3. **(FIGURE 1)** Place rotation arm (item 5) on arm support (item 1) with the welded sleeve toward front of blower and away from chute base. Insert a 5/8" x 2 1/4" bolt (item 7) through rotation arm and arm support, and thread bolt through arm support. Tighten securely and loosen 1/8" of a turn. Lock bolt on underside of arm support using a 5/8" nut.
4. **(FIGURE 1)** Insert steel cable (item 8) through the two small holes in chute base from the inside with equal length on both sides.
5. **(FIGURE 1)** Install anti-friction ring (item 9) on blower chute base. Only one position provides a perfect fit.
6. **(FIGURE 1)** Place chute (item 10) over anti-friction ring and adjust so that chute opening is facing straight forward and the two small holes in chute base are on the right hand side.
7. **(FIGURE 1)** Install two retaining plates with cable guide (item 11) on left hand side of blower chute base using four 1/4" x 3/4" bolts, lockwashers and nuts. Retaining plate guides must be pointing away from each other. Install the two standard retaining plates (item 12) on the other side of chute using four 1/4" x 3/4", lockwashers and nuts. Torque the eight 1/4" bolts to 9-11 lbs/ft



INSTRUCTION SHEET

8. **(FIGURE 6)** Install hand guard (item 1) on chute with the top portion inside the chute and the bottom section outside the chute base ring (item 4). Place two 1/4" x 3/4" bolts (item 2) with the heads on the outside of the chute, through the chute, then through the hand guard, and secure with a flat washer, lockwasher and nut on each bolt. Torque to 9-11 lbs/ft.
9. **(FIGURE 7)** With the chute opening facing forward and rotation arm parallel to blower ends, route cable ends around chute base (item 1) away from each other, around the rotation arm pulleys (item 2) from the inside to the outside, and secure cable ends on the front and rear sides of chute using the two cable clamps (item 3) and four 1/4" lockwashers. There should be approximately 1" of cable protruding from each cable clamp. Torque to 9-11 lbs/ft.

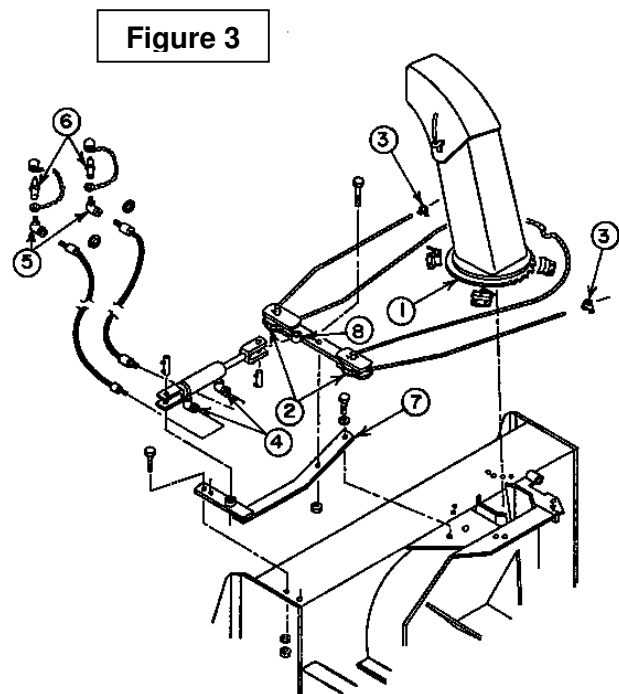
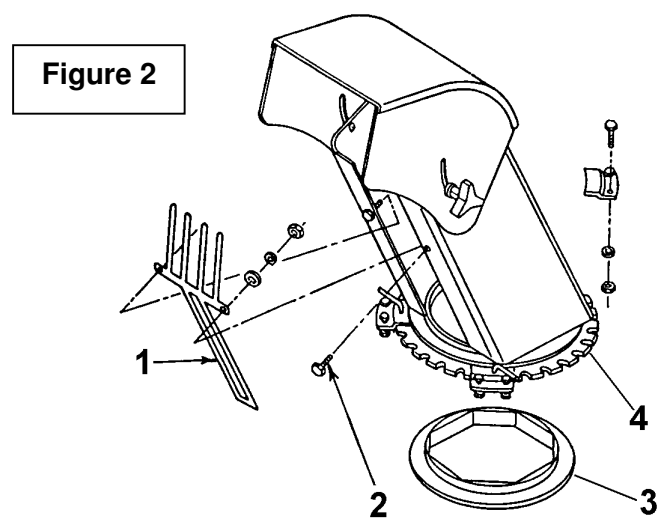
NOTE: If the chute does not rotate an equal distance on each side, readjust.

IMPORTANT: Adjust the chute rotation cable so that the snow does not come into interference with the cabin, when the snowblower functions and when it is in raised position.

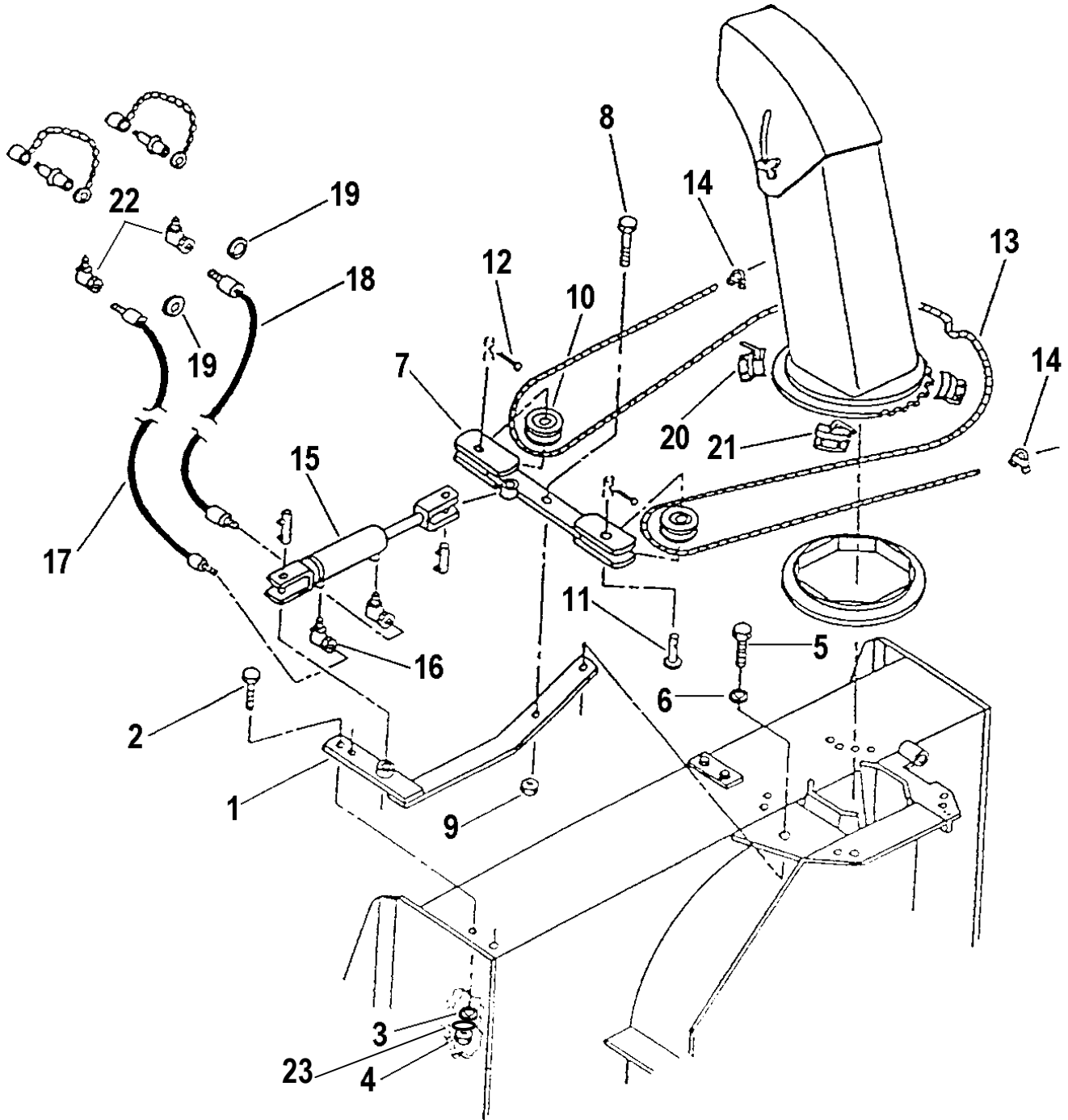
10. Install a 90° elbow, 3/8" male x 1/4" pivoting female (item 4, included), in each cylinder port using thread sealant. With the cylinder ports facing you, and base end to your left, set both elbows at approximately 2 o'clock.
11. Using thread sealant, install a 90° elbow, 3/8" male x 3/8" pivoting female (item 5, not included), at one end of each hose. Install a male quick coupler with dust cap (item 6, included) over each adapter (dust cap ring must be on hose before installation).

9379 ROTATION BY CYLINDER

12. Attach one hose (not included) to cylinder base and elbow, and another hose (not included) to the cylinder rod and elbow.
13. Install cylinder base end on rotation support (item 7, cylinder ports on underside) and rod end of rotation arm (item 8) using two 3/4" pins and secure with cotter pins (provided with the cylinder).



PIÈCES



INSTRUCTION SHEET

9379 ROTATION BY CYLINDER

PARTS

REF.	DESCRIPTION	QTY	# PART
1	Support arm	1	659796
2	Hex bolt 3/8" NC x 1"	2	O/L
3	Lockwasher 3/8"	2	O/L
4	Hex. nut 3/8" NC.	2	O/L
5	Hex bolt 5/8" NC x 1"	1	O/L
6	Lockwasher 5/8"	1	O/L
7	Rotation arm	1	659870
8	Hex. bolt 5/8" NC x 2 1/4"	1	O/L
9	Hex. nut 5/8" NC	1	O/L
10	Pulley 2 1/2"	2	656037
11	Pin 5/8" x 1 1/8" lg.	2	659871
12	Cotter pin 1/8" dia. x 1"	2	O/L
13	Cable 3/16" dia. x 100" lg.	1	660078
14	Cable clamp	2	654202
15	Cylinder & pins	1	665433
	Attaching pins 3/4" x 2 1/2"	2	665235
	Cotter pins	2	O/L
	Seal Kit	1	665434
16	Elbow 900	2	654438
17	Hose 1/4" x 51"	1	-
18	Hose 1/4" x 46"	1	-
	Coupler tip	2	657094
	Dust cap	2	658203
19	Plastic identification ring - green	2	658209
	Plastic identification ring - yellow	2	658206
20	Retaining plate with cable guide - left	1	660076
21	Retaining plate with cable guide - right	1	660077
22	Elbow 90o 3/8" NPT STM x 3/8" NPT SWF	2	-
23	Flat washer 3/8" (7/16" hole) PTD	2	O/L