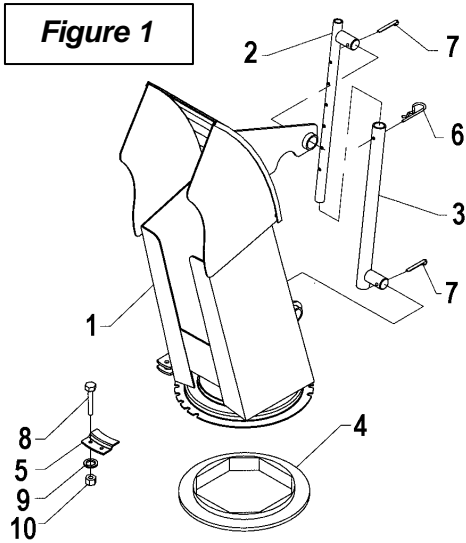




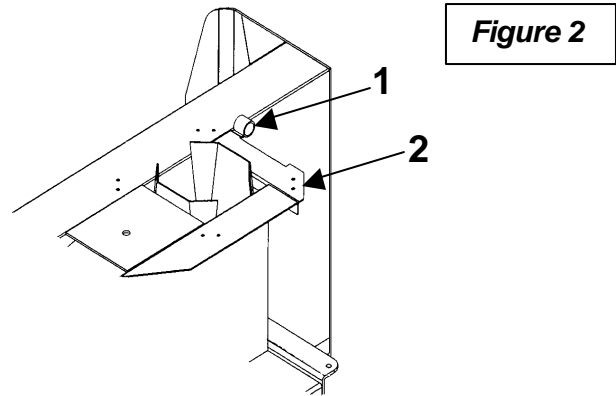
**INSTALLATION**

1. **Figure 1:** Place the nylon ring (item 4) over the chute base, placing the raised part upside and toward the center of the frame.



2. **Figure 3:** Insert the 1 1/16"lg. plastic bushing (item 1) in the worm support bracket (item 2). Grease the two ends of the rotation worm (item 3) and insert the rotation worm in the bushing (item 1).

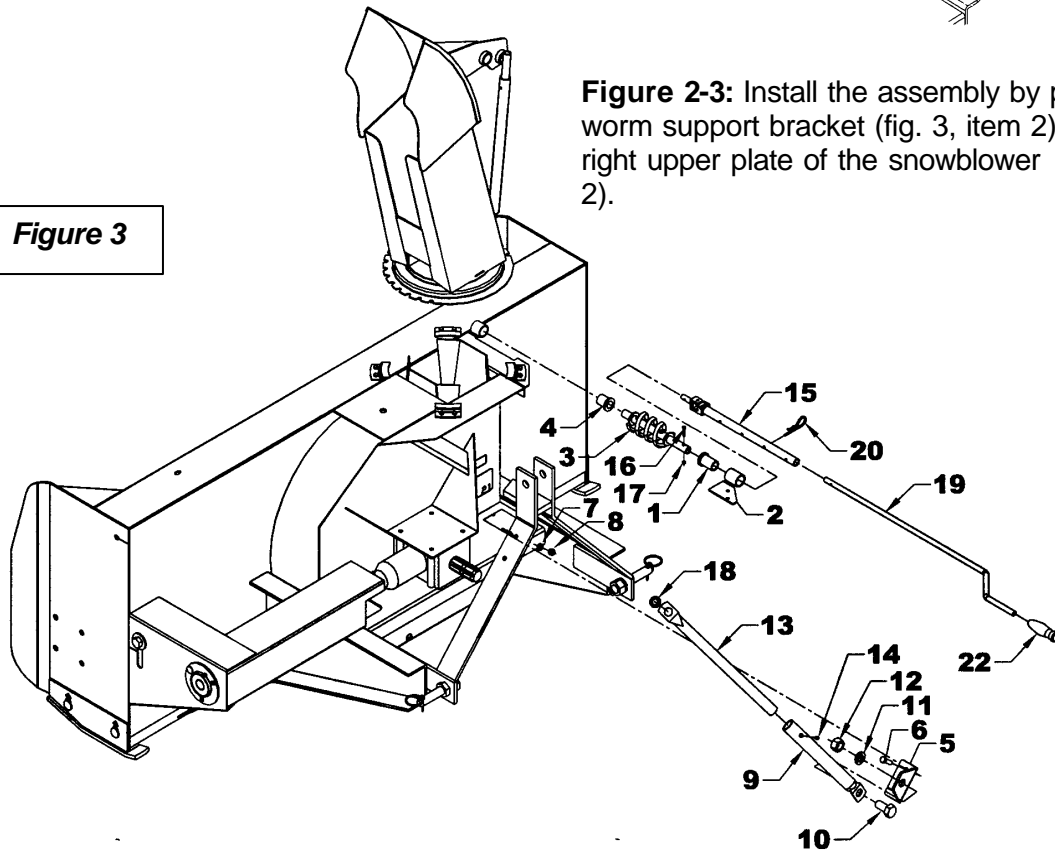
3. **Figure 2-3:** Insert the 1 5/16" plastic bushing (fig.3, item 4) in the tube welded behind blower (fig.2, item 1)



**Figure 2**

3. **Figure 2-3:** Install the assembly by placing the worm support bracket (fig. 3, item 2) under the right upper plate of the snowblower (fig.2, item 2).

**Figure 3**





## INSTRUCTION SHEET

## 9377 – MANUAL CHUTE ROTATION

4. **Figure 1:** Install the adjustment tube (item 3) in the lower hole on the backside of the chute and the adjustment rod (item 2) in the upper hole. Lock in place using the 1/4" x 2" (item 7) cotter pins then insert the  $\varnothing$ 5mm x 100mm hair pin (item 6) in the adjustment tube hole (item 3).
5. **Figure 1:** Install the chute (item 1) over the nylon ring (item 4), applying grease in between, and place the four retaining plates (item 5). Secure using eight 1/4" x 3/4" bolts, lockwashers and nuts (items 8-9-10). Tighten all bolts securely.
6. **Figure 3:** Install the support angle (item 5) on the 3 point left attaching plate using two 3/8"NC x 1 1/4" bolts, lockwashers and nuts (items 6-7-8). Tighten securely.
7. **Figure 3:** Install anchor tube (item 9) on the support angle (item 5) using a 3/4"NC x 1 1/2" bolt, lockwasher and nut (items 10-11-12) making sure the tube leans toward the tractor.
8. **Figure 3:** Insert handle support bracket (item 13) inside the anchor tube (item 9). Adjust the height of the handle support bracket according to your needs and shorten if necessary. Fasten loosely with a 3/8" x 1/2" set screw (item 14).
9. **Figure 3:** Insert assembled rotation tube (item 15) inside the rotation worm assembly (items 1-2-3-4). Align holes and insert a 10-24 x 1" allen socket head capscrew (item 16) making sure the capscrew sinks in the worm. Secure with a nylon insert locknut (item 17).
10. **Figure 3:** Install the plastic grommet (item 18) in the handle support bracket (item 13).
11. **Figure 3:** Insert the handle (item 19) inside the grommet and inside the rotation tube (item 15). Select desired length, align nearest holes and secure with a 4mm x 80mm hairpin (item 20).

12. **Figure 3:** Adjust handle position and height to a comfortable and safe operating position after the snowblower has been mounted to the tractor. Tighten setscrew (item 14) on anchor tube as well as the 3/4" x 1 1/2" bolt, 3/4" lockwasher and 3/4" nut securely (items 10-11-12).

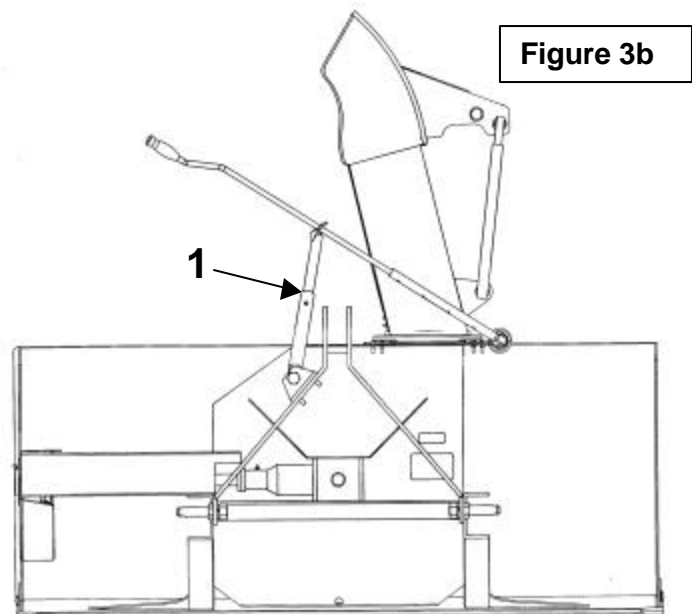
13. **Figure 3b:** To insure the proper functioning of the manual rotation, the handle support (item 1) must be positioned the closest possible to the top link mounting point of the three point hitch while making sure it does not come into contact with the operator's seat when the snowblower is fully raised.



**CAUTION:** To avoid personal injury, check the full lifting range of the snowblower, to ensure that the chute rotation handle is clear of the operator's area when the snowblower is in raised position.

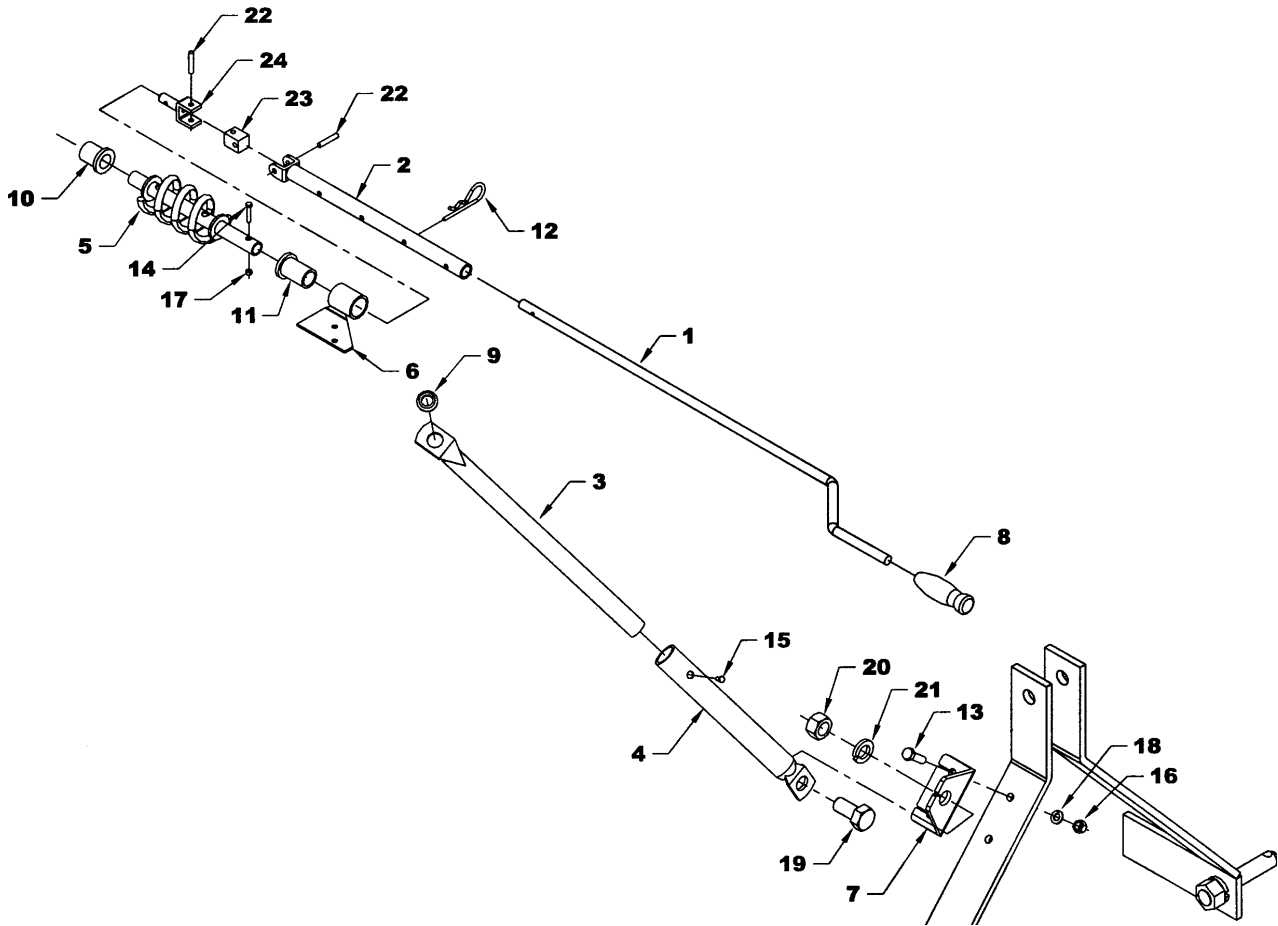
14. **Figure 3:** Install plastic handle (item 22) over rotation handle.

15. Tighten all bolts according to the Torque Specification Table at the end of the manual.





MANUAL ROTATION – 9377



**INSTRUCTION SHEET****9377 – MANUAL CHUTE ROTATION****MANUAL ROTATION – 9377**

<b>REF.</b>	<b>DESCRIPTION</b>	<b>QTY</b>	<b>PART #</b>
1	Handle	1	658252
2	Rotation tube	1	660188
3	Handle support bracket	1	660187
4	Anchor tube	1	660269
5	Rotation worm	1	659161
6	Worm support bracket	1	659145
7	Support angle	1	660388
8	Plastic handle	1	656797
9	Plastic grommet	1	657390
10	Plastic bushing 1 5/16"	1	657335
11	Plastic bushing 1 11/16"	1	657336
12	Hairpin 4mm x 80mm	1	1800002
13	Bolt hex. 3/8"NC x 1 1/4" PTD	2	O/L
14	Allen socket head capscrew 10-24 x 1" PTD	1	0800009
15	Square head setscrew 3/8" x 1/2" PTD	1	0600006
16	Nut hex. 3/8" NC PTD	2	O/L
17	Nylon insert locknut 10-24 PTD	1	1000002
18	Lockwasher 3/8" PTD	2	O/L
19	Bolt hex. 3/4"NC x 1 1/2" PTD	1	O/L
20	Nut hex. 3/4" NC PTD	1	O/L
21	Lockwasher 3/4" PTD	1	O/L
22	Roll pin 1/4" x 1 1/4" lg PTD	2	O/L
23	Universal block	1	658193
24	Rotation yoke	1	659595