

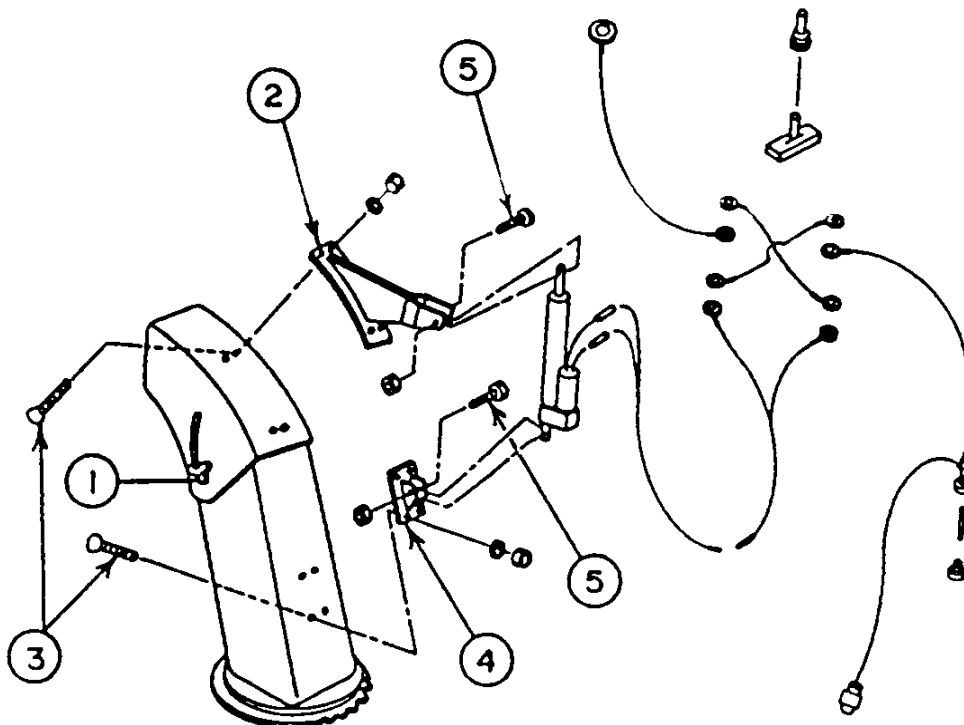


## INSTRUCTION SHEET

## ELECTRIC DEFLECTOR - 9369

### ELECTRIC CHUTE DEFLECTOR - 9369 (OPTIONAL) (FIGURE 4)

1. Remove the two manual adjustment knobs and bolts from each side of deflector and replace with two 5/16" x 3/4" carriage bolts, using original nylon washers and two 5/16"NC nylon nuts. Leave 1/16" play.
2. Place deflector bracket (item 2) on center of chute deflector, flush with bottom edge of deflector. Using this bracket as a template, drill four 11/32" holes in deflector, and bolt in place with four 5/16" x 3/4" allen flat socket cap screw (item 3), lockwashers and nuts, with the capscrew heads inside the chute. Tighten so that capscrew heads sink flush to inside surface of deflector.
3. Retract actuator rod completely and secure to deflector bracket (item 2) and chute bracket (item 4) which will be installed in step 4 next, using two 1/4" x 1 1/4" bolts (item 5) and 1/4" NC nylon nuts. Secure loosely to permit movement.
4. Open deflector to maximum so that actuator rod retracts completely. Place chute bracket (item 4) on the center rear of chute and using bracket as a template, drill four 11/32" holes in chute. Bolt bracket to chute using four 5/16" x 3/4" allen flat socket cap screw, lockwashers and nuts, with the capscrew heads inside the chute. Tighten so that capscrew heads sink flush with inside surface.
5. Drill one 1/2" hole in tractor for control switch. Drill one 0.593" hole at least 2 1/2" from control switch hole for fuse holder. The two holes must be drilled in an appropriate location and must not interfere with existing controls or electrical systems.
6. Solder one 18" wire to the side terminal of fuse holder and the other 18" wire with eyelet to the bottom terminal (see diagram next page).
7. Install control switch and fuse holder. Thread rubber toggle protector over switch.





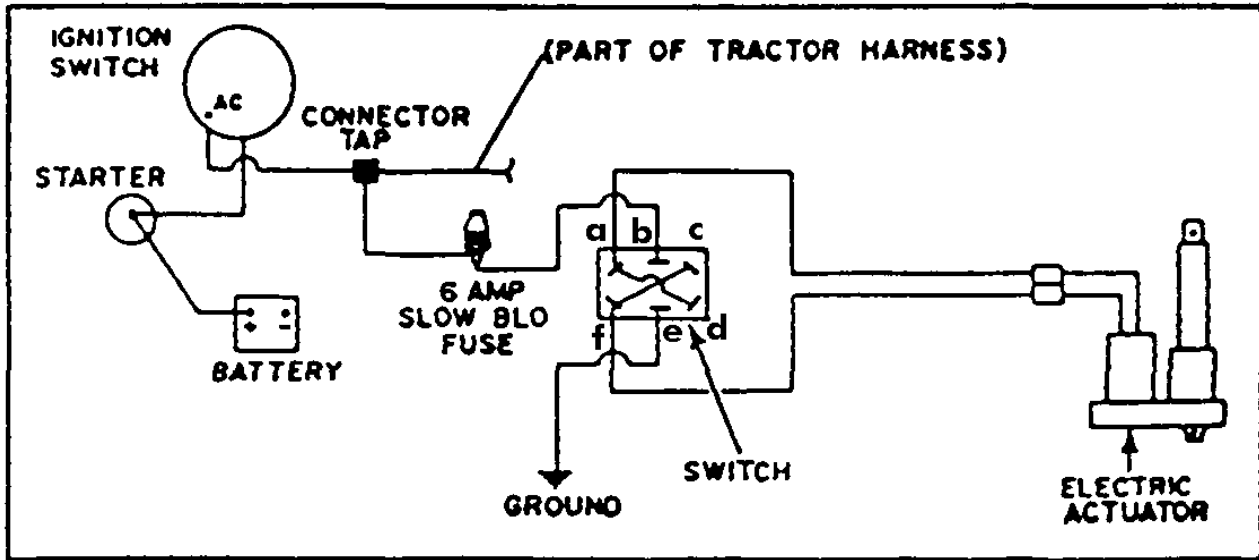
## INSTRUCTION SHEET

## ELECTRIC DEFLECTOR - 9369

8. Connect eyelet end of 18" wire to "b" terminal on control switch (see diagram).
9. Connect one end of the 17" wire to the "e" terminal on the control switch (see diagram). Connect other end to a suitable ground on the tractor frame.
10. Connect one end of one 5" wire to the "a" terminal on control switch (see diagram). Connect other end to the "d" terminal on control switch (see diagram).
11. Connect one end of the other 5" wire to the "c" terminal on control switch (see diagram). Connect other end to the "f" terminal on control switch (see diagram).
12. Connect eyelet end of the 102" double wire to the "a" & "f" terminals on control switch (see diagram).

13. Connect one end of the fused wire to wire from terminal "B" and the other end to tractor ignition switch using connector tap.
14. Connect other ends of the 102" double wire to the actuator motor. Put this wire at a convenient location for snowblower removal. Install the wire connectors with one male and one female connector to the actuator half of the wire. This will allow the snowblower to be easily dismantled.
15. Secure wires away from moving parts using the provided tie wraps and adhesive clips.

**NOTE:** If deflector functions opposite to direction of control switch, simply reverse actuator lead wires.



**ELECTRIC DEFLECTOR DIAGRAM**



# INSTRUCTION SHEET

# ELECTRIC DEFLECTOR - 9369

## ELECTRIC CHUTE DEFLECTOR – 9369 (OPTIONAL)

REF.	DESCRIPTION	QTY.	PART NUMBER
1	Double wire ass'y 102"	1	660695
2	Fuse 6 amp.	1	657285
3	Wire ass'y 17"	1	655442
4	Wire ass'y 18"	1	660692
5	Wire ass'y 5"	2	655441
6	Wire 16 GA x 18"	1	660323
7	Rubber cap	1	658666
8	Connector tap	1	656665
9	Connector	2	656664
10	Fuse holder	1	658665
11	Switch	1	658778
12	Actuator	1	656848
13	Deflector bracket	1	660008
14	Chute bracket	1	660137
15	Allen capscrew 5/16" x 3/4"	8	O/L
16	Hex. nut 5/16"NC	8	O/L
17	Lockwasher 5/16"	8	O/L
18	Bolt 1/4"NC x 1 1/2"	2	O/L
19	Nylon hex. nut 1/4"NC	2	O/L
20	Connector (male)	2	655217
21	Connector (female)	2	657853
22	Carriage bolt 5/16" NC x 3/4"	2	O/L
23	Nylon hex. nut 5/16" NC	2	O/L

