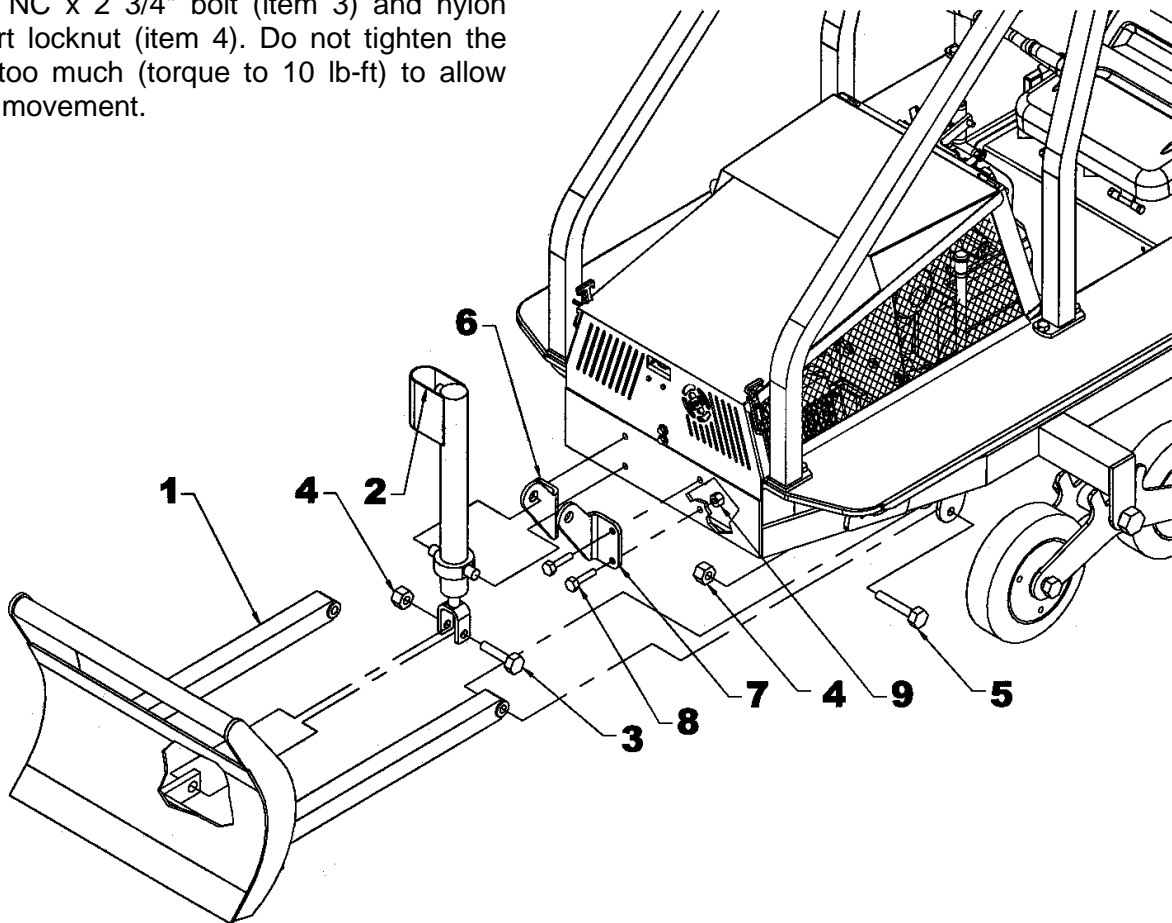


INSTALLATION

1. Remove the original blade by removing the 3/4" NC x 2 3/4" bolt (item 3) and nylon insert locknut (item 4).
2. Remove the two 3/4" NC x 4 1/2" bolts (item 5) and nylon insert locknuts (item 4). Keep all hardware to install the new 48" blade.
3. Secure the 48" blade (item 1) by reinstalling the two bolts (item 5) and nylon insert locknuts (item 4). Do not tighten the nuts too much (torque to 10 lb-ft) to allow free movement.
4. Reinstall the cylinder on the blade with the 3/4" NC x 2 3/4" bolt (item 3) and nylon insert locknut (item 4). Do not tighten the nut too much (torque to 10 lb-ft) to allow free movement.



48" FRONT BLADE

REF.	DESCRIPTION	QTY	PART #
1	48" front blade	1	110207

