



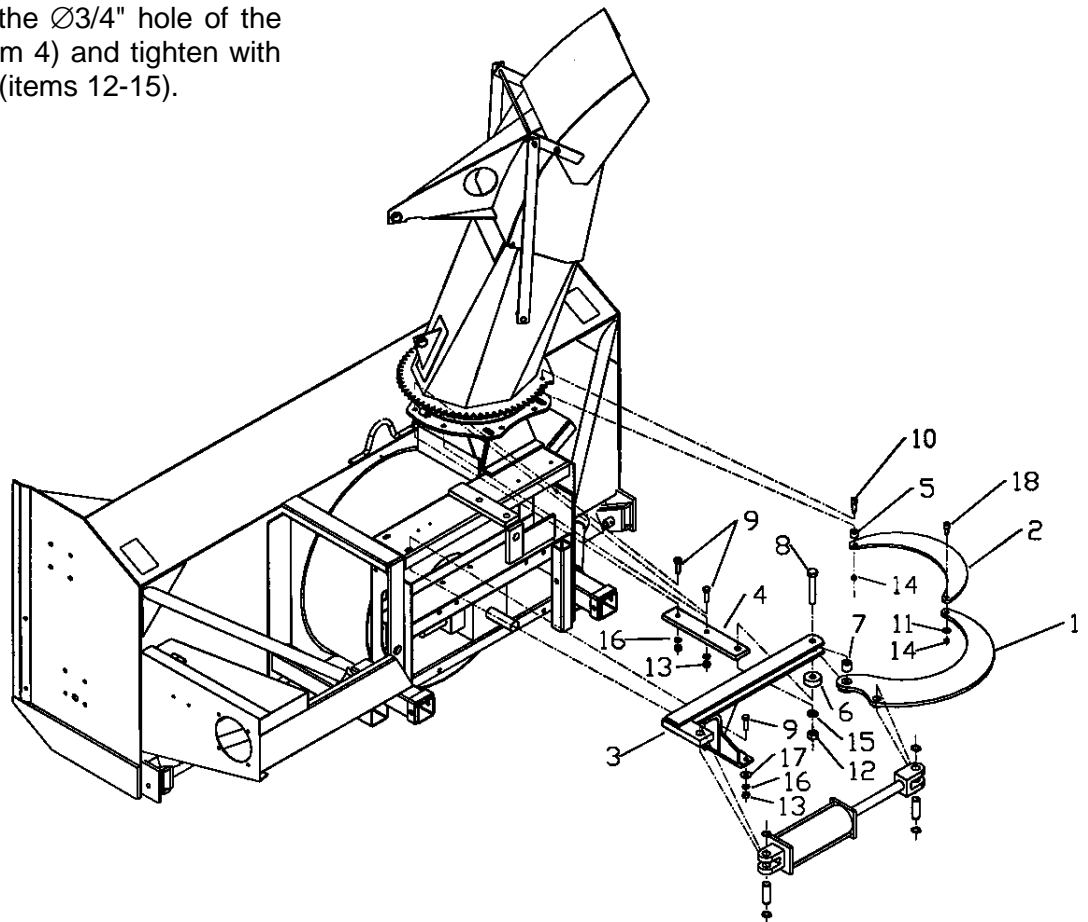
## INSTRUCTION SHEET

## 8172 ROTATION BY CYLINDER

### Hydraulic Rotation by Cylinder - 8172

1. Install bell crank bracket (item 4) under the base of the chute support at the centre of the machine by using two 1/2" NC x 1 3/4" hex. bolts (item 9). Tighten with two lockwashers (item 16) and nuts (item 13).
2. Install the cylinder bracket (item 3) on the housing, attaching everything with two 1/2" NC x 1 3/4" bolts (item 9). Tighten with two lockwashers (item 16) nuts (item 13) and 9/16" flatwashers (item 17).
3. Insert a bushing (item 7) in the  $\text{Ø}1\ 1/4$ " hole of the bell crank (item 1) and slide the bell crank between the flat bars of the cylinder bracket. Slide a pivot bushing (item 6) under the cylinder bracket (item 3). Fasten everything by inserting a 3/4" NC x 4 1/2" bolt (item 8) through the  $\text{Ø}3/4$ " hole of the bell crank bracket (item 4) and tighten with a lockwasher and nut (items 12-15).
4. Fasten the push arm (item 2) in the  $\text{Ø}1/2$ " hole, under the chute gear, using a 1/2" x 1 1/4" shoulder screw (item 10) with the head of the screw upward. Place a spacer (item 5) between the push arm (item 2) and the gear and tighten with a 3/8" NC stover nut (item 14), leaving some movement to the articulation. Attach the other end over the bell crank by inserting a 1/2" x 3/4" shoulder screw (item 18, with the head upward) and tighten with a 7/16" flatwasher (item 11) and a 3/8" NC stover nut (item 14), leaving some movement to the articulation.

**IMPORTANT: To prevent premature wear, grease generously the mobile parts.**





# INSTRUCTION SHEET

# 8172 ROTATION BY CYLINDER

REF.	DESCRIPTION	QTY	PART NUMBER
1	Bell crank	1	664536
2	Push arm	1	664535
3	Cylinder bracket	1	664534
4	Bell crank bracket	1	665735
5	Spacer	1	665732
6	Pivot bushing	1	665731
7	Bushing	1	664476
8	Hex. Bolt 3/4" NC x 4 1/2"	1	O/L
9	Hex. Bolt 1/2" NC x 1 3/4"	4	O/L
10	Shoulder screw 1/2" x 1 1/4", 3/8" NC	1	3200016
11	Flatwasher $\varnothing 7/16$ "	1	O/L
12	Hex. Nut 3/4" NC	1	O/L
13	Hex. Nut 1/2" NC	4	O/L
14	Stover nut 3/8" NC	2	O/L
15	Lockwasher 3/4"	1	O/L
16	Lockwasher 1/2"	4	O/L
17	Flatwasher 9/16" PTD	2	O/L
18	Shoulder screw 1/2" x 3/4"	1	664577

