

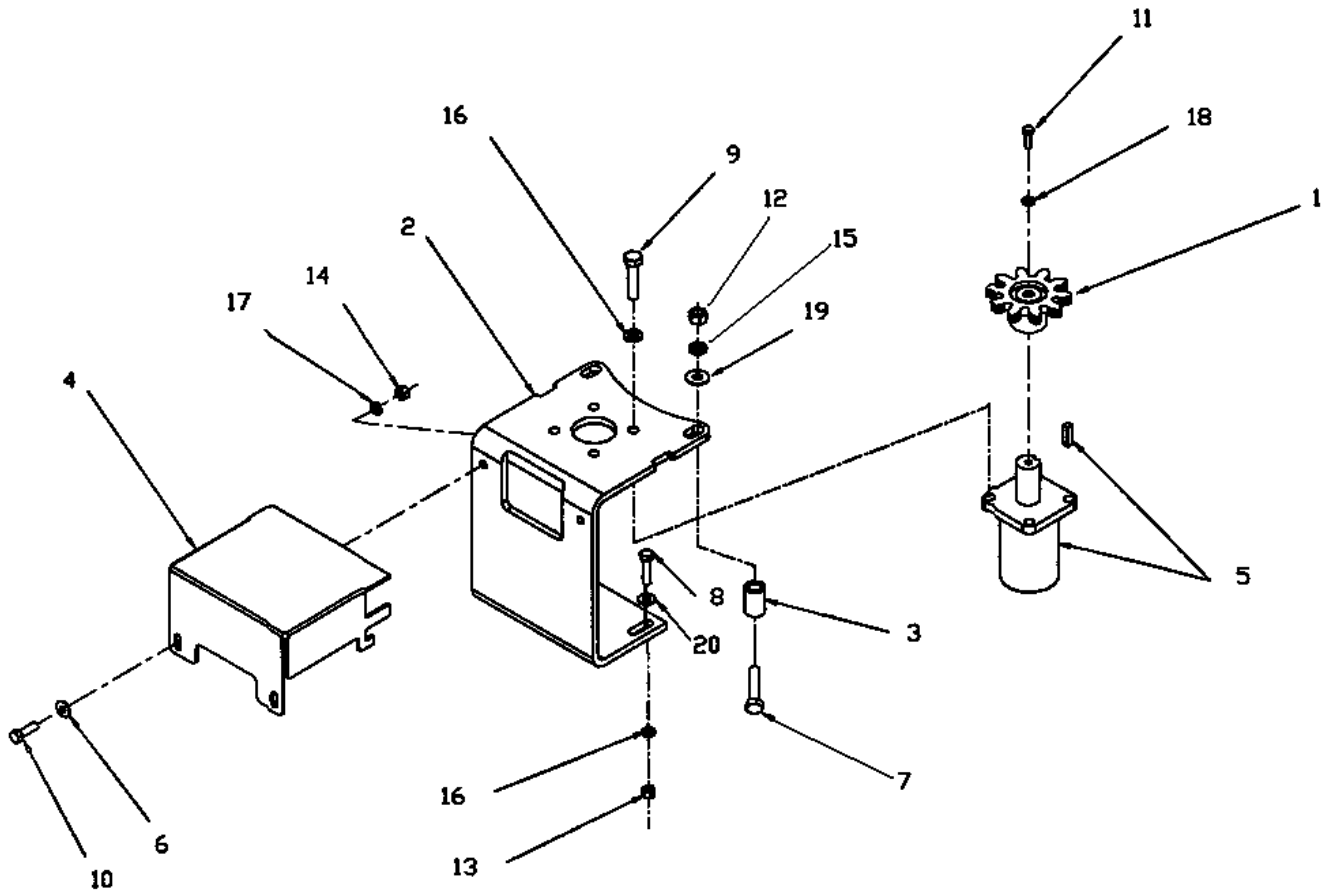


INSTRUCTION SHEET

8164 ROTATION BY MOTOR

Hydraulic Rotation by Motor - 8164

1. Fasten the motor (item 5) using four 3/8" x 3/4" bolts, lockwashers (item 9-16). Tighten according to the Torque Specification Table.
2. Place the motor gear (item 1) on top of the motor, with hub facing down. Fasten the gear in place with a 1/4" NC x 5/8" bolt and a 1/4" lockwasher (item 11-18). Tighten firmly.
3. Install the motor support (item 2) on the backside of the chute base, secure with two 3/8" x 1 1/4" bolts, 7/16" flatwashers, lockwashers and nuts (items 8-20-16-13). Do not tighten immediately.
4. Attach the upper part of the support with two 1/2" x 3" bolts, two 9/16" flatwashers, spacers, lockwashers and nuts (items 7-19-3-15-12). Do not tighten immediately.
5. Adjust the motor gear (item 1) and the chute gear, leaving play so that they run together smoothly.
6. Grease regularly the gears to prevent premature wear and rust on contact points.





INSTRUCTION SHEET

8164 ROTATION BY MOTOR

REF.	DESCRIPTION	QTY	PART NUMBER
1	Motor gear	1	665930
2	Motor support	1	665931
3	Spacer for motor support	2	665932
4	Shield	1	664839
5	Hydraulic motor	1	662448
	Seal kit	1	662449
6	Flatwasher Ø5/16"	2	O/L
7	Hex bolt 1/2" NC x 3"	2	O/L
8	Hex. bolt 3/8" NC x 1 1/4"	2	O/L
9	Hex. bolt 3/8"NC x 3/4"	4	O/L
10	Hex. bolt 5/16" NC x 1"	2	O/L
11	Hex. bolt 1/4" NC x 5/8"	1	O/L
12	Hex. nut 1/2" NC	2	O/L
13	Hex. nut 3/8" NC	2	O/L
14	Hex. nut 5/16" NC	2	O/L
15	Lockwasher 1/2"	2	O/L
16	Lockwasher 3/8"	6	O/L
17	Lockwasher 5/16"	2	O/L
18	Lockwasher 1/4"	2	O/L
19	Flatwasher 9/16" dia. hole	2	O/L
20	Flatwasher Ø7/16"	2	O/L
OPTIONAL			
21	Cushion valve	1	664999
22	Hex. bolt 1/4" NC x 2"	2	O/L
23	Lockwasher 1/4"	2	O/L
24	Hex. nut 1/4" NC	2	O/L

