



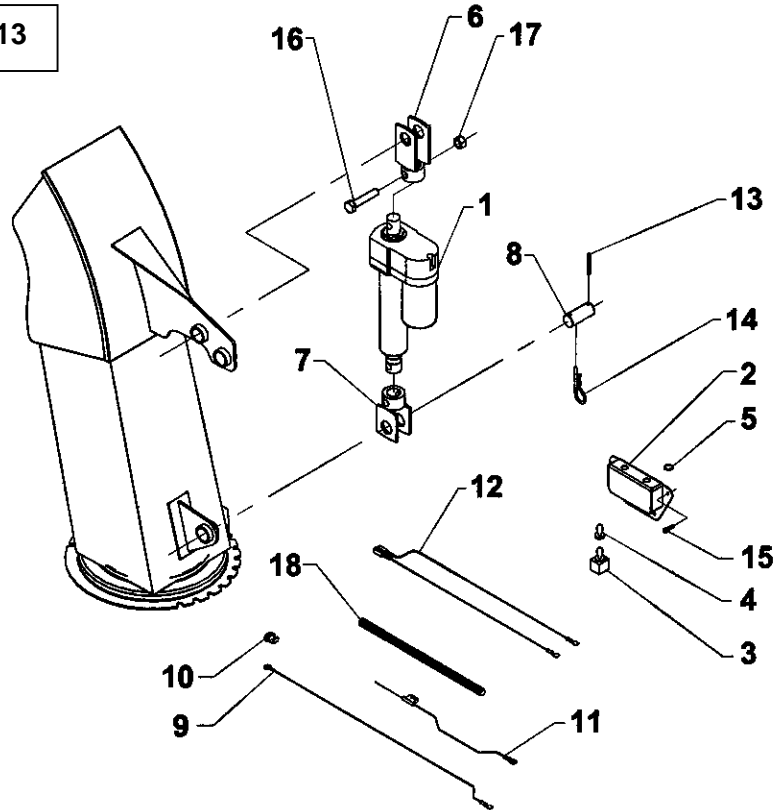
INSTRUCTION SHEET

8154 ELECTRIC DEFLECTOR

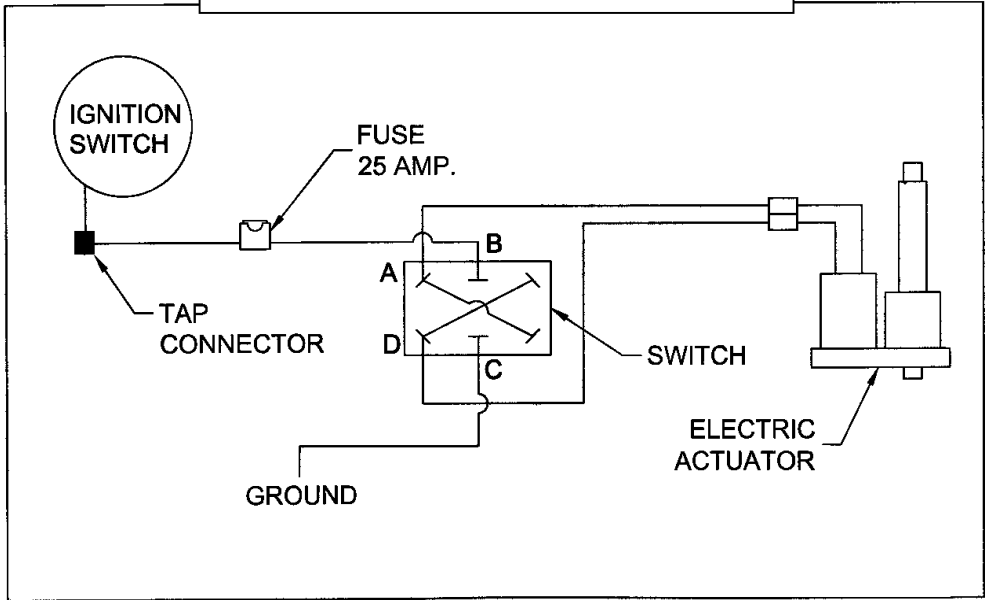
8154 – Electric Deflector for H64 (Figure 13 & Electrical Diagram)

1. Shut off the engine and remove the ignition key.
 2. Install the clevis (items 6-7) on the actuator (item 1) and attach using a 1/2" NC x 2 1/2" bolt (item 16) and a 1/2" NC nylon insert locknut (item 17).
 3. Install a 3/16" x 1 3/4" spring pin (item 13) on each 1" pin (item 8).
 4. Install the actuator on the chute (see Figure 13 for actuator position) using two 1" pins (item 8) and secure with a 4mm x 80mm hairpin (item 14).
- NOTE: The base end of the electric actuator attaches in the hole closest to the chute (as shown on figure 13).
5. Connect the ground wire (item 9, black 72") to terminal "C" on switch (item 3).
 6. Connect fuse wire (item 11, red 72") to terminal "B" on switch (item 3).
 7. Connect actuator wires (item 12, 1 red and 1 black 360") to terminal "A" and "D" on switch (item 3).
 8. If switch box is already installed for the electric rotation, go to step 8. If not, install the switch box (item 2) at a convenient location for easy access when operating the snowblower. Secure using three #10 x 1/2" self-drilling screws (item 15). Leave a hole to install the ground wire. Avoid placing switch box where wires are already installed as they could be damaged.
 9. Unscrew the nut and remove the lockwasher from the switch. Insert switch (item 3) in the switch box. Tighten the switch with its nut. Place the plastic cap (item 5) over the free hole in the switch box (if necessary) and screw the rubber cap (item 4) on the switch.
 10. Connect the black ground wire's eye terminal (item 9) to the fourth #10 x 1/2" screw (item 15), and screw to the free hole of the switch box (item 2).
 11. Connect the fuse wire (item 11) to the tractor ignition switch wire using the tap connector (item 10).
 12. Connect the actuator wires (item 12) to the electric actuator (item 1).
 13. Place a loom (item 18) around all wires to protect them. Secure the loom using tie wraps.

Figure 13



Electrical Diagram





INSTRUCTION SHEET

8154 ELECTRIC DEFLECTOR

ELECTRIC DEFLECTOR - 8154

REF.	DESCRIPTION	QTY	PART #								
1	Electric actuator	1	665573								
2	Switch box	1	666048								
3	Switch	1	663383								
4	Rubber cap	1	658666								
5	Plastic cap	1	662530								
6	Clevis – rod end	1	666049								
7	Clevis – fixed end	1	666051								
8	Pin 1"	2	666057								
9	Ground wire 72" (black)	1	666054								
10	Tap connector	1	656665								
11	Fuse wire 72" (red)	1	666055								
12	Actuator wire	1	666056								
13	Spring pin 3/16" x 1 3/4", PTD	2	O/L								
14	Hairpin 4mm x 80mm, PTD	2	O/L								
15	Self-drilling screw #10 x 1/2", PTD	4	O/L								
16	Bolt hex. 1/2"NC x 2 1/2", PTD	2	O/L	17	Nylon insert locknut 1/2"NC, PTD	2	O/L	18	Loom	1	666053
17	Nylon insert locknut 1/2"NC, PTD	2	O/L								
18	Loom	1	666053								

