



INSTRUCTION SHEET

8151 ELECTRIC ROTATION / DEFLECTOR

APPLICATION:

Electric Deflector for B74, B84, B94 and H76 Snowblowers

Electric Chute Rotation for H64 and H76 Snowblowers and

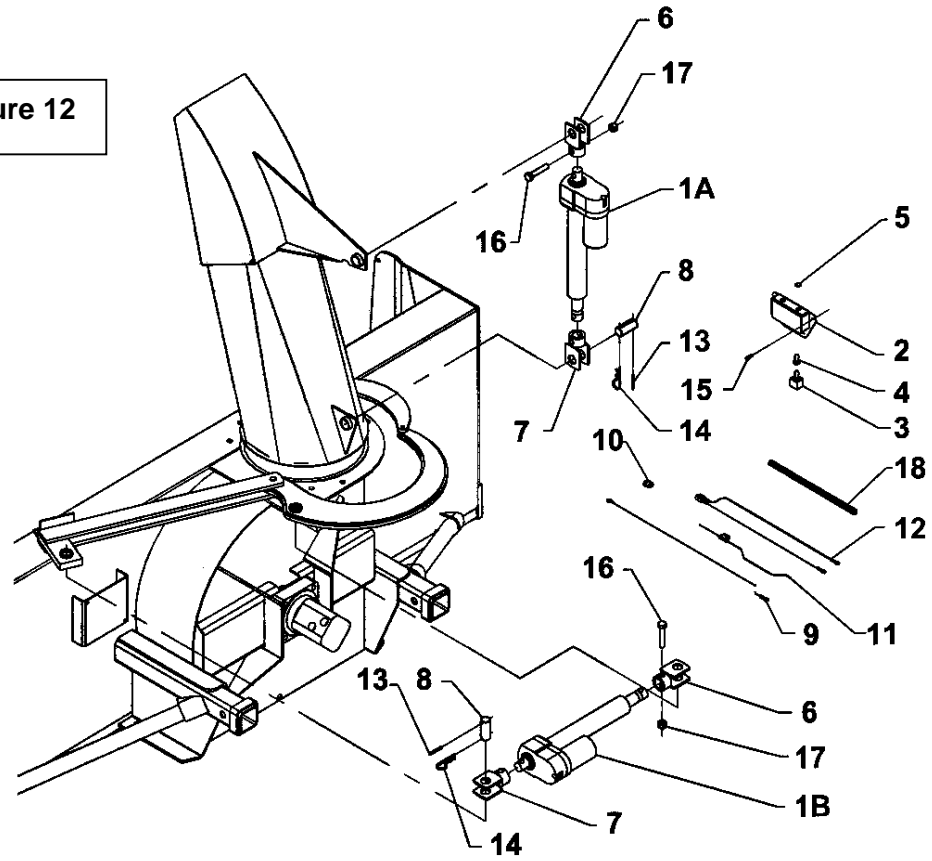
B54-B64 (requires 8056) / B74 (requires 8057) / B84-B94 (requires 8046)

8151 - ELECTRIC ROTATION / DEFLECTOR

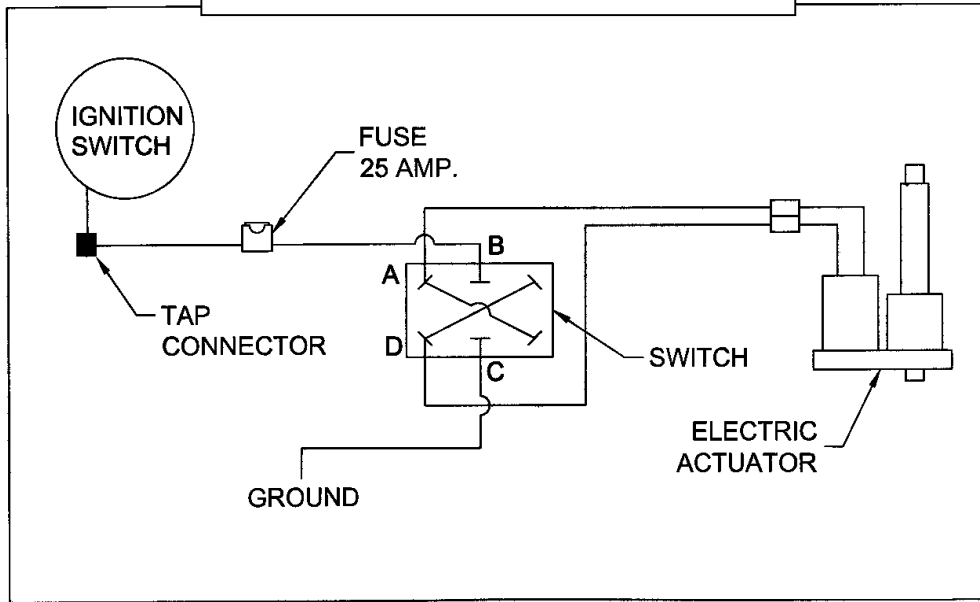
1. Shut off the engine and remove the ignition key.
2. Install the clevis (items 6-7) on the actuator (item 1A or 1B) and attach using a 1/2" NC x 2 1/2" bolt (item 16) and a 1/2" NC nylon insert locknut (item 17).
3. Install a 3/16" x 1 3/4" spring pin (item 13) on each 1" pin (item 8).
4. Install the actuator on the chute or the rotation (see Figure 12 for actuator position), using two 1" pins (item 8) and secure with a 4mm x 80mm hairpin (item 14).
5. Connect the ground wire (item 9, black 72") to terminal "C" on switch (item 3).
6. Connect fuse wire (item 11, red 72") to terminal "B" on switch (item 3).
7. Connect actuator wires (item 12, 1 red and 1 black 360") to terminal "A" and "D" on switch (item 3).
8. If you have an electric rotation or an electric deflector, repeat the steps from the beginning but use the same switch box for both switches.
9. Install the switch box (item 2) at a convenient location for easy access when operating the snowblower. Secure using three #10 x 1/2" self-drilling screws (item 15). Leave a hole to install the ground wire. Avoid placing the switch box where wires are already installed as they could be damaged.
10. Unscrew the nut and remove the lockwasher from the switch. Insert switch (item 3) in the switch box. Tighten the switch with its nut. Place the plastic cap (item 5) over the free hole in the switch box (if necessary) and screw the rubber cap (item 4) on the switch.
11. Connect the black ground wire's eye terminal (item 9) to the fourth #10 x 1/2" screw (item 15) and screw in the free hole of the switch box (item 2).
12. Connect the fuse wire (item 11) to the tractor ignition switch wire using the tap connector (item 10).
13. Connect the actuator wire (item 12) to the electric actuator (item 1A or 1B).
14. Place a loom (item 18) around all wires to protect them. Secure the loom using tie wraps.



Figure 12



Electrical Diagram





ELECTRIC ROTATION /DEFLECTOR- 8151

REF.	DESCRIPTION	QTY	PART #
1	Electric Actuator	1	662983
2	Switch box	1	666048
3	Switch	1	663383
4	Rubber cap	1	658666
5	Plastic cap	1	662530
6	Clevis – rod end	1	666049
7	Clevis – fixed end	1	666050
8	Pin 1"	2	666057
9	Ground wire 72" (black)	1	666054
10	Tap connector	1	656665
11	Fuse wire 72" (red)	1	666055
12	Actuator wire	1	666056
13	Spring pin 3/16" x 1 3/4", PTD	2	O/L
14	Hairpin 4mm x 80mm, PTD	2	O/L
15	Self-drilling screw #10 x 1/2", PTD	4	O/L
16	Bolt hex. 1/2"NC x 2 1/2" GR 5, PTD	2	O/L
17	Nylon insert locknut 1/2"NC, PTD	2	O/L
18	Loom	1	666053

