

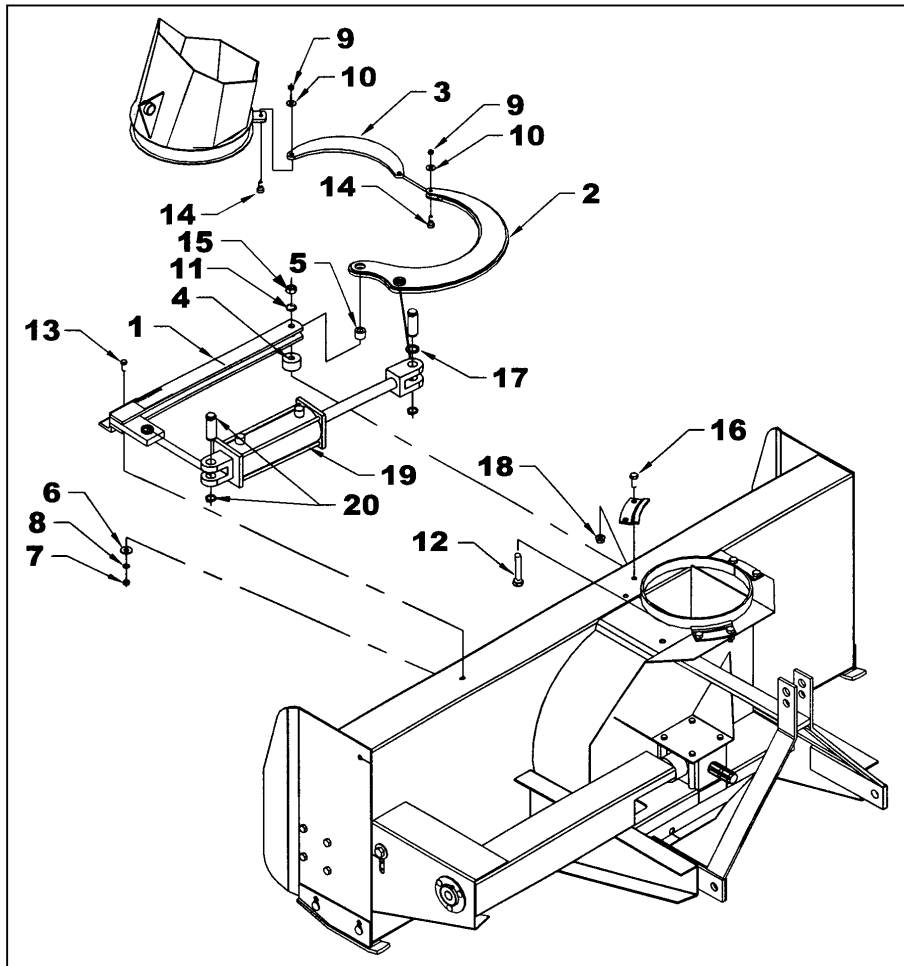


INSTRUCTION SHEET

8057 ROTATION WITH CYLINDER

INSTALLATION

1. Grease the snowblower section of the chute base then place chute on top of it.
2. Attach the chute with the retaining plates and fasten with six 1/2"NC x 1 1/4" lg bolts, and flange nuts (items 16-18).
3. Fasten the cylinder bracket (item 1) on the snowblower housing with a 3/8"NC x 1" lg bolt, 7/16" dia.hole flat washer, 3/8" lockwasher and 3/8"NC hex. nut (items 13-6-8-7).
4. Install the bell crank (item 2) on the frame by sliding a spacer (item 4) under the cylinder bracket. Remove any paint and metal burrs from the bell crank pivot hole. Oil the outside of the bushing (item 5) and insert it in the hole of the bell crank. Slide the bell crank between the flat bars of the cylinder bracket. Fasten everything by inserting a 5/8"NC x 3 3/4" lg bolt, lockwasher and hex. nut 5/8"NC (items 12-11-15) in the order shown on figure.



INSTRUCTION SHEET**8057 ROTATION WITH CYLINDER**

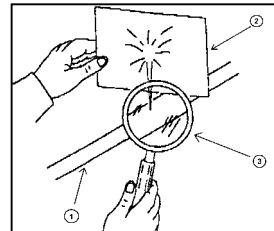
5. Install the push arm (item 3) by placing it over the flat bar welded to the chute, and insert a 3/8" x 3/4" x 5/16"NC shoulder screw (item 14) under the part. Tighten with a 3/8" flat washer and a 5/16"NC stover nut (items 10-9) leaving some movement to the push arm.
6. Slide the other push arm end between the bell crank flat bars, and insert a 3/8" x 3/4" x 5/16"NC shoulder screw (item 14) under the part. Tighten with a 5/16" flat washer and a 5/16"NC stover nut (items 10-9) leaving some movement to the mechanism.
7. Attach the fixed section of the cylinder (item 19) to the cylinder bracket (item 1) and the sliding section to the bell crank (item 2) using the cylinder pins and circlips (item 20) as well as the 1 1/16" flat washer (item 17) making sure to place the flat washer on top of cylinder and directing the hydraulic ports upward as illustrated.

NOTE: Grease the base of the chute regularly to avoid premature wear: Remove the shoulder screw (item 14) from the chute base and remove the retaining plates.



WARNING: To avoid serious personal injury: Escaping hydraulic/diesel fluid under pressure can penetrate the skin causing serious injury.

- Do not use your hands to check for leaks. Use a piece of cardboard or paper to search for leaks.



- (1) Hydraulic line
- (2) Cardboard
- (3) Magnifying glass

- Stop engine and relieve pressure before connecting or disconnecting lines.
- Tighten all connections before starting engine or pressurizing lines.

If any fluid is injected into the skin, obtain medical attention immediately or gangrene may result.



INSTRUCTION SHEET

8057 ROTATION WITH CYLINDER

HYDRAULIC ROTATION BY CYLINDER – KIT 8057

REF.	DESCRIPTION	QTY	PART #
1	Cylinder bracket	1	664450
2	Bell crank	1	664518
3	Push arm	1	664501
4	Spacer	1	664429
5	Bushing	1	664428
6	Flat washer 7/16" dia. hole PTD	1	O/L
7	Hex. nut 3/8" NC PTD	1	O/L
8	Lockwasher 3/8" PTD	1	O/L
9	Stover nut 5/16" NC PTD	2	1100002
10	Flat washer 3/8" dia. hole PTD	2	O/L
11	Lockwasher 5/8" PTD	1	O/L
12	Bolt hex. 5/8" NC x 3 3/4" gr.5 PTD	1	O/L
13	Bolt hex. 3/8" NC x 1" gr.5 PTD	1	O/L
14	Shoulder screw 3/8" x 3/4", 5/16"NC	2	664576
15	Nut hex. 5/8"NC PTD	1	O/L
16	Flat washer 1 1/16"	1	O/L

