



INSTRUCTION SHEET

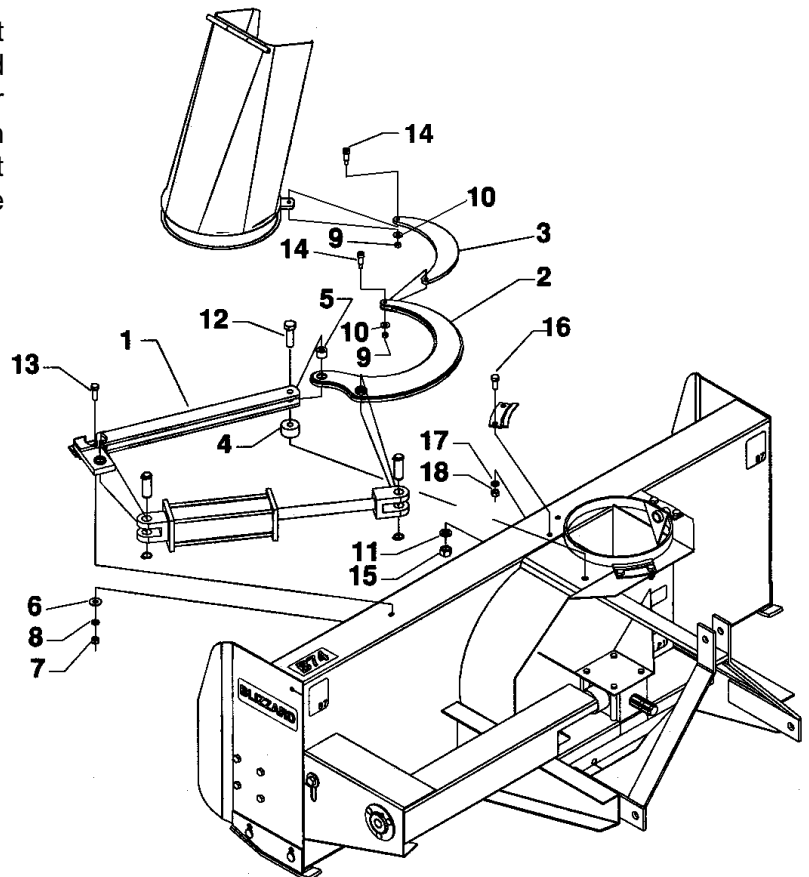
8057 ROTATION WITH CYLINDER

INSTALLATION

1. Attach the chute with the retaining plates and fasten with six 1/2"NC x 1 1/4" lg bolts, lockwashers and nuts (items 16-17-18).
2. Fasten the cylinder bracket (item 1) on the snowblower housing with a 3/8"NC x 1" lg, flatwasher 7/16" dia.hole, lockwasher 3/8" and hex. nut 3/8"NC (items 13-6-8-7).
3. Install the bell crank (item 2) on the frame by sliding a spacer (item 4) under the cylinder bracket. Remove any paint and metal burrs from the bell crank pivot hole. Oil the outside of the bushing (item 5) and insert it in the hole of the bell crank. Slide the bell crank between the flat bars of the cylinder bracket. Fasten everything by inserting a 5/8"NC x 3 3/4" lg bolt, lockwasher and hex. nut 5/8"NC (items 12-11-15).
4. Install the push arm (item 3) by sliding it over the flat bar welded to the chute, and insert a 3/8" x 3/4" x 5/16"NC shoulder screw (item 14) over the part. Tighten with a 3/8" flatwasher and a 5/16"NC stover nut (items 10-9) leaving some movement to the push arm.

5. Slide the other push arm end between the bell crank flat bars, and insert a 3/8" x 3/4" x 5/16"NC shoulder screw (item 14) over the part. Tighten with a 3/8" flatwasher and a 5/16"NC stover nut (items 10-9) leaving some movement to the mechanism.

NOTE: GREASE THE BASE OF THE CHUTE REGULARLY TO AVOID PREMATURE WEAR: REMOVE THE SHOULDER SCREW (ITEM 14) FROM THE CHUTE BASE AND REMOVE THE RETAINING PLATES.





INSTRUCTION SHEET

8057 ROTATION WITH CYLINDER

HYDRAULIC ROTATION BY CYLINDER – KIT 8057

REF.	DESCRIPTION	QTY	PART #
1	Cylinder bracket	1	664450
2	Bell crank	1	664518
3	Push arm	1	664501
4	Spacer	1	664429
5	Bushing	1	664428
6	Flatwasher 7/16" dia. hole PTD	1	O/L
7	Hex. nut 3/8" NC PTD	1	O/L
8	Lockwasher 3/8" PTD	1	O/L
9	Stover nut 5/16" NC PTD	2	O/L
10	Flat washer 3/8" dia. hole PTD	2	O/L
11	Lockwasher 5/8" PTD	1	O/L
12	Bolt hex. 5/8" NC x 3 3/4" gr.5 PTD	1	O/L
13	Bolt hex. 3/8" NC x 1" gr.5 PTD	1	O/L
14	Shoulder screw 3/8" x 3/4", 5/16"NC	2	664576
15	Nut hex. 5/8"NC PTD	1	O/L
16	Bolt hex. 1/2"NC x 1 1/4" gr.5 PTD	2	O/L
17	Lockwasher 1/2" PTD	2	O/L
18	Nut hex. 1/2"NC PTD	2	O/L

