



INSTRUCTION SHEET

8051 – MANUAL CHUTE ROTATION

Manual Chute Rotation – 8051 (Option) (Figure A, next page)

1. Remove the rotation tube (item 16) by removing the bolt and nut (item 17).
2. Secure the chute with the three retaining plates (and the spacers for SA74 & SA80), using six 1/2" x 1 1/4" bolts (item 9) and serrated flange nuts (item 12).
3. Align flatbar (item 2) with the two holes on top of the snowblower (fig B, items 1-2) as shown on figure 1. Attach with a 3/4"NC x 2 1/2" bolt (item 5) lockwasher (item 13) and nut (item 10) in hole next to the chute (fig B, item 1), and a 1/2"NC x 1 1/4" bolt (item 8), 9/16" flatwasher (item 15) and a 1/2"NC serrated flange nut (item 12) in the side hole (fig.B, item 2).
4. Install manual rotation bracket (item 1) on flatbar (item 2) as shown on figure. Secure on left side with a 5/8" x 2 1/2" bolt (item 6), two 11/16" flatwashers (item 14) and nylon insert locknut (item 11), and on the right side with a 1/2"NC x 1 3/4" bolt (item 7) and a serrated flange nut (item 12).
5. Reinstall the rotation tube (item 16).

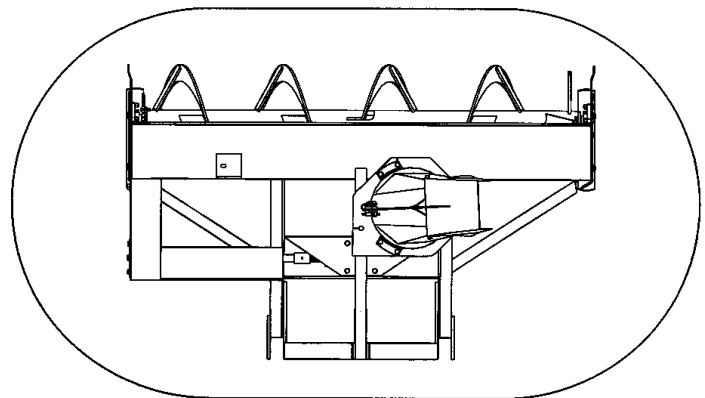


CAUTION: To avoid personal injury, check the full lifting range of the snowblower, to ensure that the chute rotation handle is clear of the operator's area when the snowblower is in raised position.

Cable Installation (Figure A, next page)

1. Place the left side of the deflector parallel to the front of the snowblower, as shown at the bottom of the page.
2. Turn deflector opening to the right, clockwise, approximately 40 degrees.
3. Tape ends of cable (item 3) with electrical tape to keep ends from fraying.
4. Pass the cable through the rotation tube (item 17) keeping an 8" spare length and locking it temporarily with the cable clamp (item 4).
5. Turn the cable one full turn around the chute base in a clockwise direction.
6. Pass the cable through the two small holes of the base of the chute (item 18), with an in and out motion.
7. Continue to route the cable by passing it under the pulley (item 19).
8. Turn the chute in the opposite direction (same angle of 40 degrees) by turning the rotation handle (item 16) counter-clockwise keeping the cable tight.
9. Attach the two ends of cable together using the cable clamp (item 4). Make sure the cable is properly tight

NOTE: Grease the base of the chute regularly to avoid premature wear.





INSTRUCTION SHEET

8051 – MANUAL CHUTE ROTATION

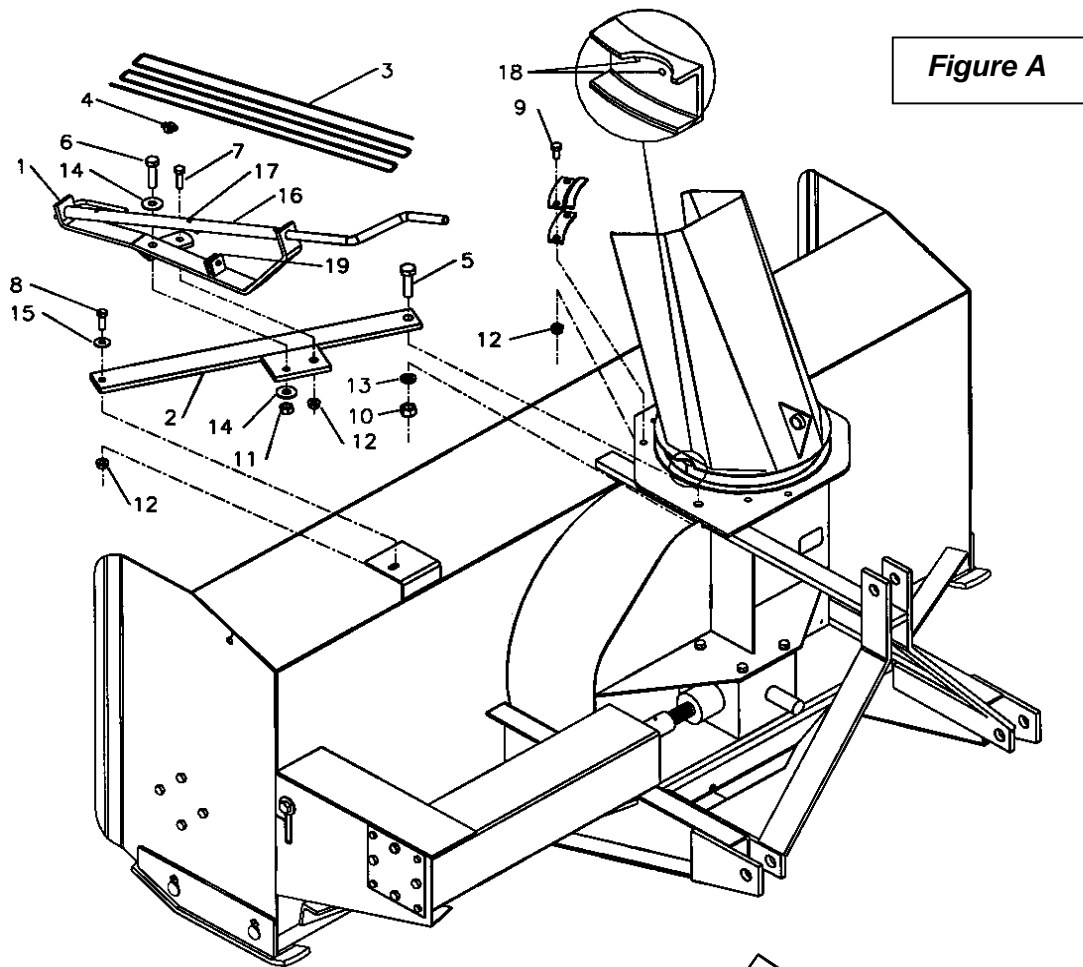


Figure A

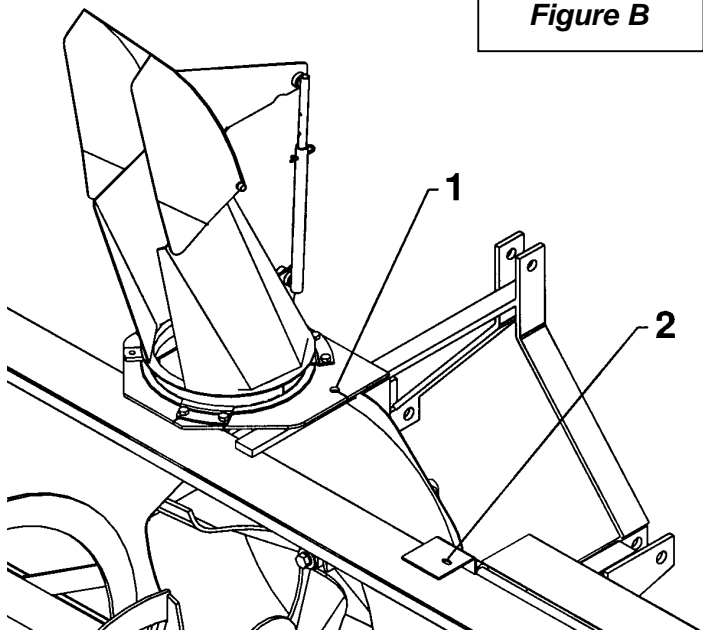
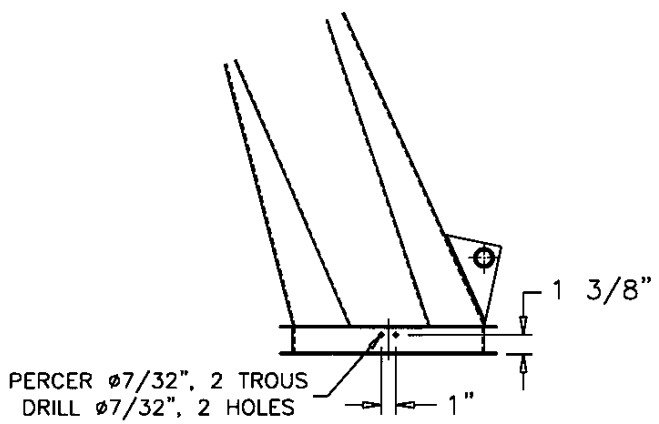


Figure B



PERCER ø7/32", 2 TROUS
DRILL ø7/32", 2 HOLES

