

INSTRUCTION SHEET

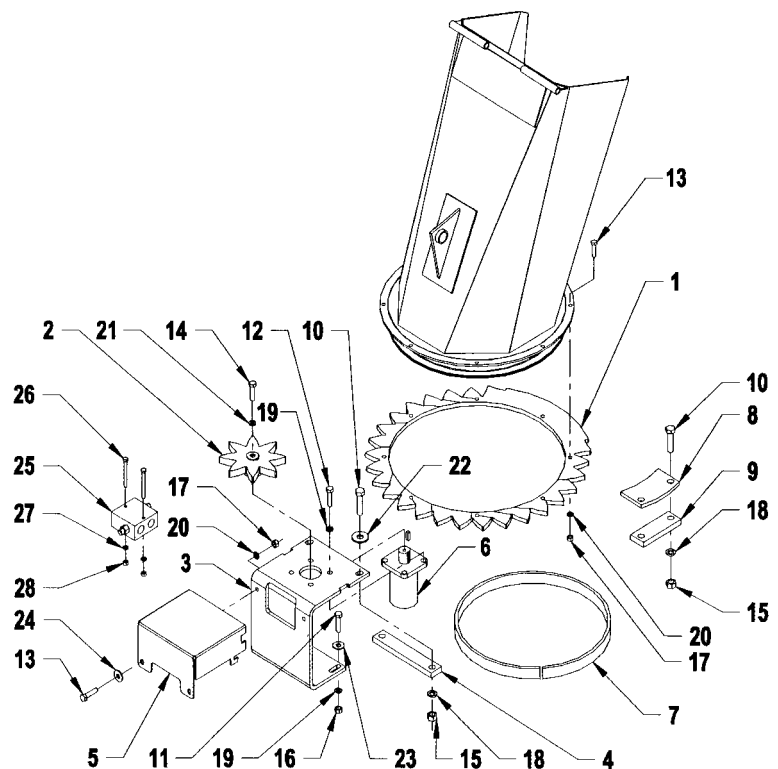
Hydraulic Rotation by Motor

1. Position the gear (item 1) on the chute base. The section without teeth and the chute discharge should be in the same direction, as shown on the illustration. Secure with 5/16" x 1" bolts, lockwashers and nuts (item 13-20-17).
2. Wind into a circle the UHMV strip (item 7) and place it at the base of the chute.
3. Install the spacers (item 9) and the retaining plates (item 8) on the chute base. Secure with six 1/2" x 2" bolts, lockwashers and nuts (items 10-18-15).
4. Install the motor support (item 3) on the backside of the chute base, and secure with two 3/8" x 1 1/4" bolts, 7/16" flatwashers, lockwashers and nuts (item 11-23-19-16). Do not tighten immediately.
5. Slip the attaching spacer (item 4) between the motor support (item 3) and the top of the snowblower. Attach the top part of the support with two 1/2" x 2" bolts, two 9/16" flatwashers, lockwashers and nuts (items 10-22-18-15). Do not tighten immediately.
6. Fasten the motor (item 6) using four 3/8" x 3/4" bolts, lockwashers (item 12-19). Tighten according to the Torque Specification Table.
7. Place the gear of the motor (item 2) on the top of the motor, with hub facing down. Fasten the gear in place with a 1/4" NC x 1" bolt and a 1/4" lockwasher (item 14-21). Tighten firmly.

8047 ROTATION BY MOTOR

Gear and Pinion Adjustments

1. Correct mounting of the system will level the gears.
2. Adjust the gears with a distance of 1/32" to 1/16". Tighten the four nuts (item 16) the ones inside and outside. Tighten firmly.
3. Connect the hydraulic hoses to the motor, and make a trial test at a very low speed.
4. Evaluate the adjustment according to the sound of the teeth. If they produce a loud noise when making contact, it means that the pinion and gear need to be closer. Readjust and repeat the operation till you hear a regular and even sound.
5. Install the cover (item 5), and secure with 5/16" x 1" bolts, flatwashers, lockwashers and nuts (item 13-24-20-17).





INSTRUCTION SHEET

8047 ROTATION BY MOTOR

PARTS

REF.	DESCRIPTION	QTY.	PART NUMBER
1	Gear of the chute	1	662273
2	Gear of the motor	1	662272
3	Motor support	1	664838
4	Spacer for motor support	1	664831
5	Cover guard	1	664839
6	Hydraulic motor	1	662448
7	Anti-friction ring "UHMW" 1/4" x 1"	1	662261
8	Retaining plate	3	662262
9	Spacer for retaining plate	3	662263
10	Hex bolt 1/2" NC x 2"	8	O/L
11	Hex. bolt 3/8" NC x 1 1/4"	2	O/L
12	Hex. bolt 3/8"NC x 3/4"	4	O/L
13	Hex. bolt 5/6" NC x 1"	10	O/L
14	Hex. bolt 1/4" NC x 1"	1	O/L
15	Hex. nut 1/2" NC	8	O/L
16	Hex. nut 3/8" NC	2	O/L
17	Hex. nut 5/16" NC	10	O/L
18	Lockwasher 1/2"	8	O/L
19	Lockwasher 3/8"	6	O/L
20	Lockwasher 5/16"	10	O/L
21	Lockwasher 1/4"	1	O/L
22	Flatwasher 9/16" dia. hole	2	O/L
23	Flatwasher Ø7/16"	2	O/L
24	Flatwasher Ø3/8"	2	O/L
OPTIONAL			
25	Cushion valve	1	664999
26	Hex. bolt 1/4" NC x 2"	2	O/L
27	Lockwasher 1/4"	2	O/L
28	Hex. nut 1/4" NC	2	O/L

