

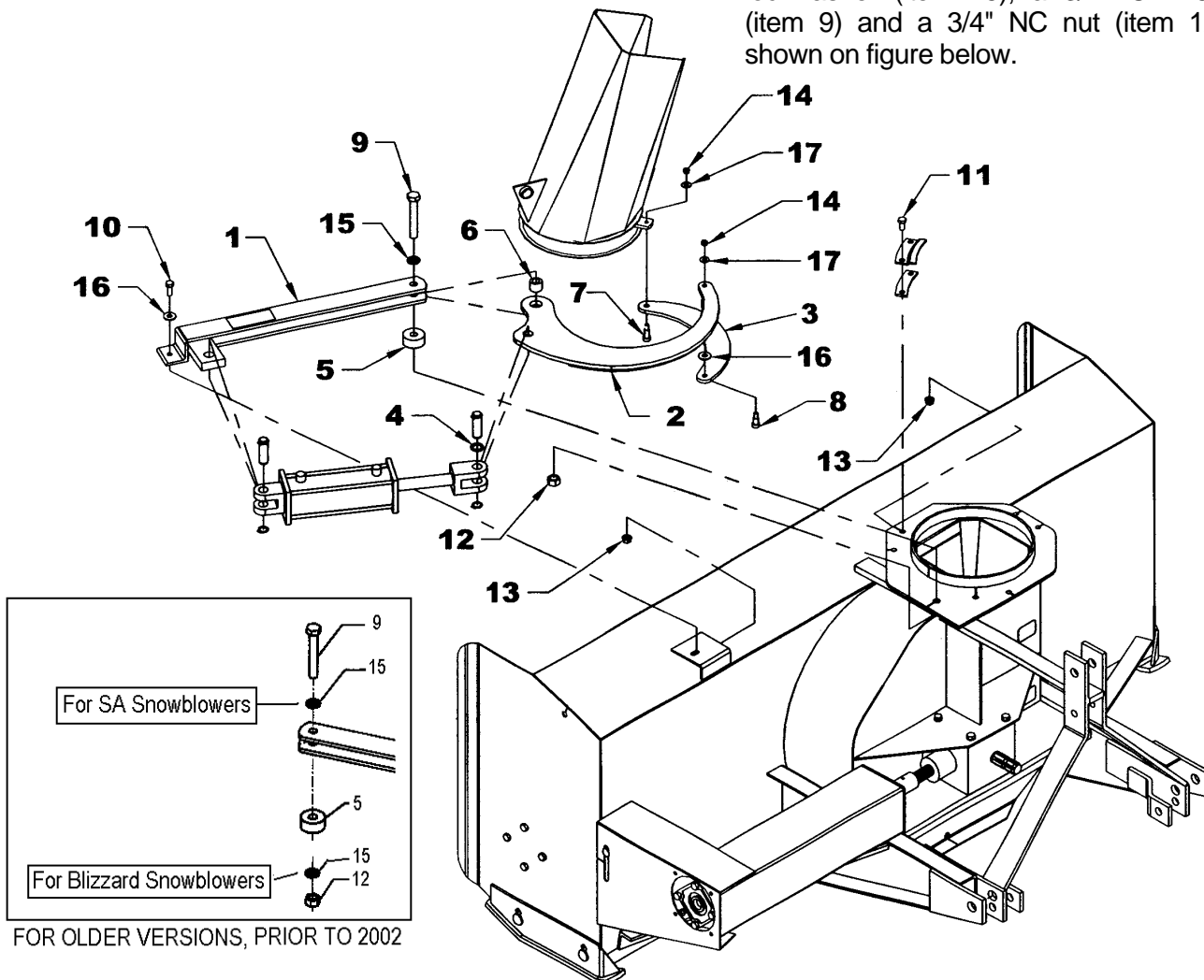


INSTRUCTION SHEET

8046 ROTATION WITH CYLINDER

INSTALLATION

1. Attach the chute with two of the retaining plates. Fasten very loosely so the chute can be tilted slightly using six 1/2"NC x 1 1/4" bolts (item 11) and serrated flange nuts (item 13). Do not install the retaining plate on the right side immediately.
2. Fasten the cylinder bracket (item 1) on the 17/32" hole in the snowblower housing with a 1/2"NC x 1 1/4" bolt (item 10), a flat washer (item 16) and a serrated flange nut (item 13).
3. Install the spacer (item 5) on the frame. Insert the bushing (item 6) in the hole on the bell crank (item 2). Slide the bell crank between the flat bars of the cylinder bracket (item 1) opposite the 13/16" hole on the housing. Fasten everything with a 3/4"NC x 5" bolt (item 9) lockwasher (item 15) and nut (item 12), as shown on figure below. Tighten securely. **For B84 & B94 models prior to 2002, use a 3/4"NC x 4 1/2" bolt instead of a 5" bolt (item 9).**
4. **For SA74 & SA80:** Insert the upper three points attaching plate in the opening located behind the frame. Secure with a 3/4" lockwasher (item 15), a 3/4"NC x 5" bolt (item 9) and a 3/4" NC nut (item 12), as shown on figure below.





INSTRUCTION SHEET

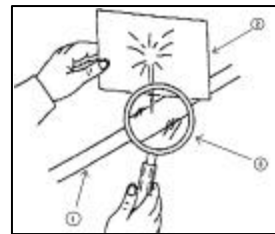
8046 ROTATION WITH CYLINDER

5. Install the push arm (item 3) by sliding it under the flat bar welded to the chute, and fasten with a 1/2" x 3/4" x 3/8"NC shoulder screw (item 7) under the part while tilting the chute slightly. Secure with a 3/8" flat washer (item 17) and a 3/8"NC stover nut (item 14) and tighten loosely to allow the pivot to work with ease.
 6. Slide the other push arm end under the bell crank (item 2), placing a 9/16" flat washer (item 16) in between. Insert a 1/2" x 1" x 3/8"NC shoulder screw (item 8) under the part. Secure with a 3/8" flat washer (item 17) and a 3/8"NC stover nut (item 14) and tighten loosely to allow the pivot to work with ease.
 7. Install the retaining plate on the right side and tighten bolts (item 11) on all 3 retaining plates.
- Note:** Grease the base of the chute regularly to avoid premature wear.
8. Attach the fixed section of the cylinder to the cylinder bracket (item 1) and the sliding section of the cylinder to the bell crank (item 2). If the cylinder pin rubs on the snowblower housing, add the 1 1/16" flat washer (item 4) making sure to place the flat washer on top of the cylinder as illustrated.



WARNING: To avoid serious personal injury: Escaping hydraulic/diesel fluid under pressure can penetrate the skin causing serious injury.

- Do not use your hands to check for leaks. Use a piece of cardboard or paper to search for leaks.



- (1) Hydraulic line
- (2) Cardboard
- (3) Magnifying glass

- Stop engine and relieve pressure before connecting or disconnecting lines.
- Tighten all connections before starting engine or pressurizing lines.

If any fluid is injected into the skin, obtain medical attention immediately or gangrene may result.

