

# INSTRUCTION SHEET

# 8046 ROTATION BY CYLINDER

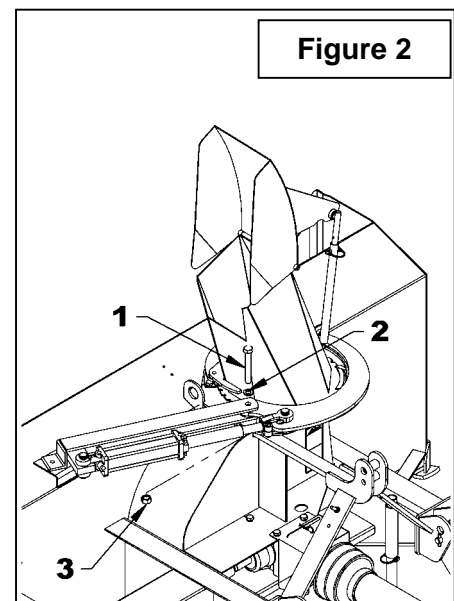
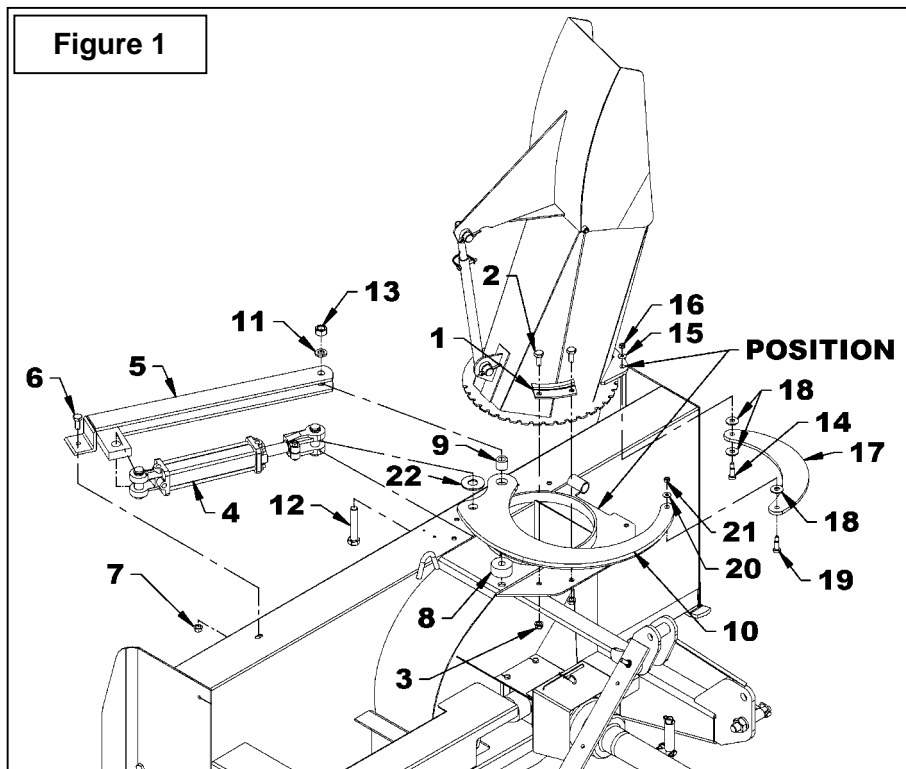
## APPLICATION

For B74, B84 and B94 snowblowers

## INSTALLATION

**REPLACÉ PAR LE SUIVANT**

- Figure 1:** Place the hole identified "POSITION" over the indentation in the housing.
- Figure 1:** Apply grease on the chute base and around the snowblower chute ring and install the chute with the four retaining plates (item 1), eight 1/4" x 3/4" bolts and eight serrated flange nuts (items 2-3). Do not tighten immediately.
- Figure 1:** Attach the rotation bracket (item 5) in the slot on the left side of the housing with a 1/2"NC x 1 1/4" hex. bolt and a 1/2" serrated flange nut (items 6-7).
- Figure 1:** Place the spacer ring (item 8) on the 13/16" hole of the housing; insert the pivot bushing (item 9) in the bell crank (item 10) and slide the bell crank between the flat bars of the rotation bracket (item 5).
- Figure 1 – B74:** Attach the other end of the bracket (item 5) and the bell crank (item 10) in the 13/16" hole of the housing with the 3/4"NC x 4" hex. bolt, a 3/4" lockwasher and a 3/4" hex. nut (items 12-11-13) in the exact order shown. Tighten securely.
- Figures 1-2 – B84 & B94:** Attach the other end of the bracket and the bell crank (fig. 7, items 5-10) in the 13/16" hole of the housing with the 3/4"NC x 5" hex. bolt, a 3/4" lockwasher and a 3/4" hex. nut (fig. 2, items 1-2-3) in the exact order shown. Tighten securely.



## INSTRUCTION SHEET

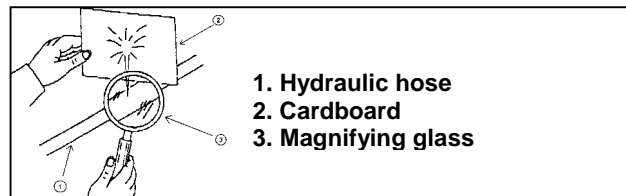
## 8046 ROTATION BY CYLINDER

7. **Figure 1:** Install one end of the push arm (item 17) under the flat bar welded on the base of the chute, first greasing generously inside the hole and secure with a 1/2" x 1" shoulder screw, two 9/16" hole flat washer, a 3/8" hole flat washer and a 3/8"NC stover nut (items 14-18-15-16) in the exact order shown. Tighten leaving some movement to the mechanism.
8. **Figure 1:** Install the other end of the push arm (item 17) under the bell crank (item 10), first greasing generously inside the hole and secure with a 1/2" x 1" shoulder screw, a 9/16" hole flat washer, a 3/8" hole flat washer and a 3/8"NC stover nut (items 19-18-20-21) in the exact order shown. Tighten leaving some movement to the mechanism.
9. **Figure 1:** Attach the fixed section of the cylinder (item 4) to the rotation bracket (item 5) and the sliding section to the bell crank (item 10) placing a  $\text{Ø } 1 \frac{1}{16}$ " flat washer (item 22) between the cylinder yoke and the top of the bell crank to prevent the cylinder yoke from rubbing on the bell crank. Secure with the cylinder pins and the circlips. Point the hydraulic ports upward as illustrated.



**CAUTION:** To avoid serious personal injury. Escaping hydraulic/ diesel fluid under pressure can penetrate the skin causing serious injury.

- Do not use your hands to check for leaks. Use a piece of cardboard or paper to search for leaks.



- Stop engine and relieve pressure before connecting or disconnecting lines.
- Tighten all connections before starting engine or pressurizing lines.

If any fluid is injected into the skin, obtain medical attention immediately or gangrene may result.

# INSTRUCTION SHEET

# 8046 ROTATION BY CYLINDER

## PARTS

REF.	DESCRIPTION	QTY	PART #
1	Rotation bracket	1	664475
2	Bell crank	1	664473
3	Push arm	1	664474
4	Flat washer 1 1/16" hole PTD	1	O/L
5	Spacer ring	1	664477
6	Pivot bushing	1	664476
7	Bolt hex. 3/4" NC x 4", gr. 5 PTD (For B74 only)	1	O/L
8	Bolt hex. 1/2" NC x 1 1/4", gr. 5 PTD	1	O/L
9	Bolt hex. 3/4" NC x 5", gr. 5 PTD (For B84 & B94 only)	1	O/L
10	Shoulder screw 1/2" x 1" lg 3/8"NC	2	664578
11	Nut hex. 3/4" NC PTD	1	O/L
12	Nut serrated flange 1/2" NC PTD	1	O/L
13	Stover nut hex 3/8" NC PTD	2	O/L
14	Lockwasher 3/4" PTD	1	O/L
15	Flat washer 3/8" hole PTD	2	O/L
16	Flat washer 9/16" hole PTD	3	O/L
17	Decal "Danger"	1	664548

